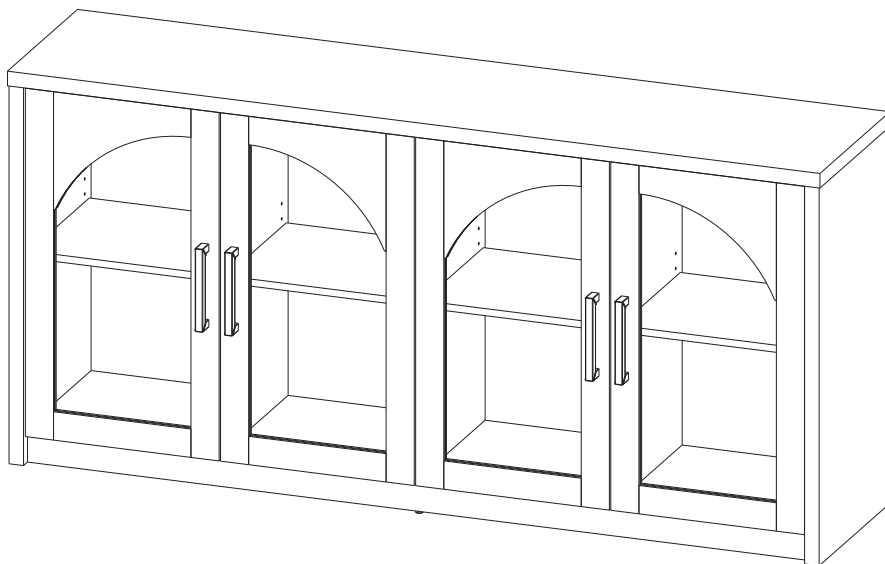


ASSEMBLY INSTRUCTIONS
COASTER FINE FURNITURE



Fine Furniture for every stage of life

103895
SIDEBOARD

ITEM: 103895



ASSEMBLY INSTRUCTIONS

ASSEMBLY TIPS:

1. Remove hardware from box and sort by size.
2. Please check to see that all hardware and parts are present prior to start of assembly.
3. Please follow attached instructions in the same sequence as numbered to assure fast & easy assembly.



WARNING!

1. Don't attempt to repair or modify parts that are broken or defective. Please contact the store immediately.
2. This product is for home use only and not intended for commercial establishments.



ASSEMBLY TIME

60 MINUTES

PARTS IDENTIFICATION

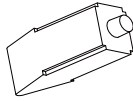
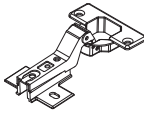
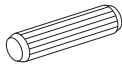

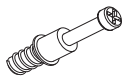
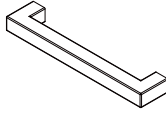


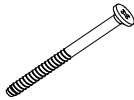
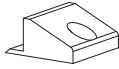


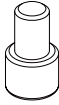
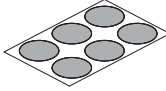
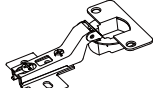
A	LEFT SIDE PANEL		1 PC	G	ADJUSTABLE SHELF		4 PCS
B	RIGHT SIDE PANEL		1 PC	H	TOP PANEL		1 PC
C	MIDDLE DIVIDER PANEL		1 PC	I	BACK PANEL		4 PCS
D	LEFT RIGHT DIVIDER PANEL		2 PCS	J	LEFT DOOR		2 PCS
E	LOWER CROSS BRACE		2 PCS	K	RIGHT DOOR		2 PCS
F	BOTTOM PANEL		1 PC				

NOTE:

Phillips head screw driver is required in the assembly process; however, manufacturer does not provide this item.

ITEM: **103895**

HARDWARE IDENTIFICATION

Z							
NO	DESCRIPTION	FIGURE	Q'TY	NO	DESCRIPTION	FIGURE	Q'TY
1	GLUE 40g		1 PC	9	HINGE Ø35mm SR		4 PCS
2	WOODEN DOWEL Ø8 x 30mm		34 PCS	10	HINGE SCREW Ø4x15mm SR		32 PCS
3	CAM BOLT Ø7 x 35.5mm SR		18 PCS	11	HANDLE L= 160mm BLK		4 PCS
4	CAM LOCK Ø15 x 12mm SR		18 PCS	12	BOLT M4x25mm BLK		8 PCS
5	BOLT Ø4.5x42mm SR		6 PCS	13	BACK PANEL SUPPORT		6 PCS
6	PLASTIC FEET Ø15m		6 PCS	14	BACK PANEL SUPPORT SCREW Ø3 x 19mm SR		6 PCS
7	PIN FOR ADJUSTABLE SHELF Ø4.9 x 8mm SR		16 PCS	15	STICKER Ø20mm		3 PCS
8	HINGE Ø35mm SR		4 PCS				

Z8, Z9, Z11 not included in blister packaging.

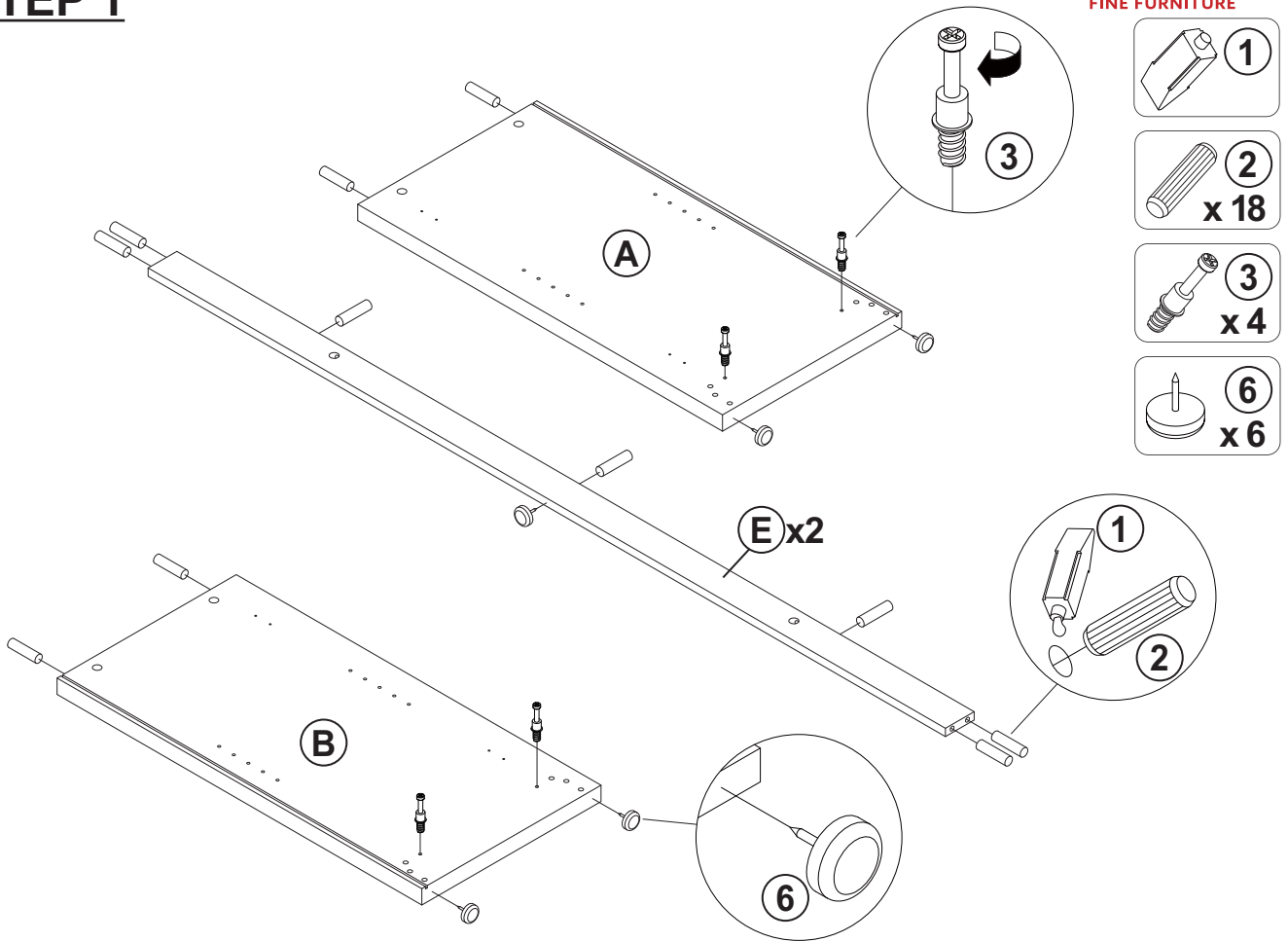
NOTE:

Phillips head screw driver is required in the assembly process; however, manufacturer does not provide this item.

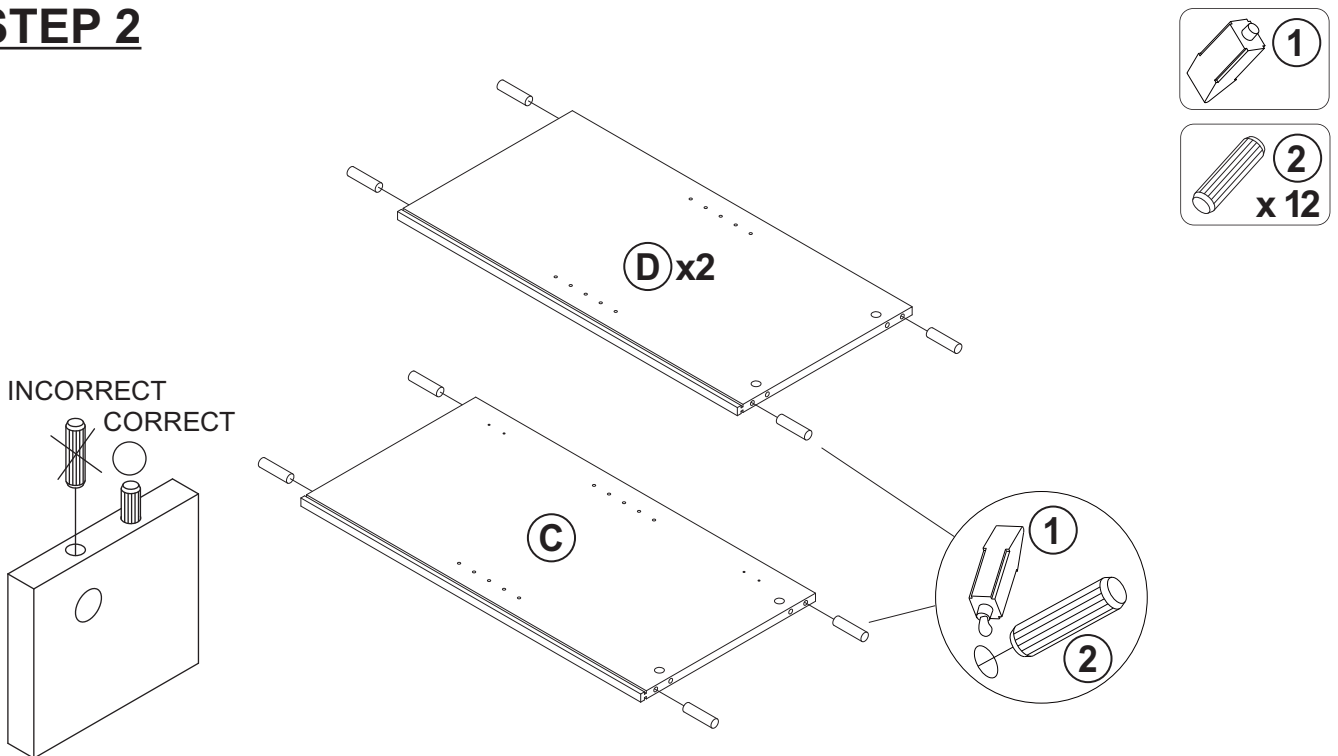
ITEM: 103895

COASTER
FINE FURNITURE

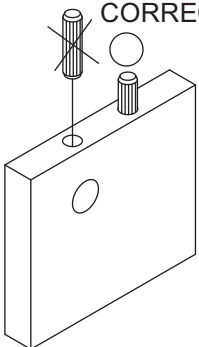
STEP 1



STEP 2



INCORRECT
CORRECT



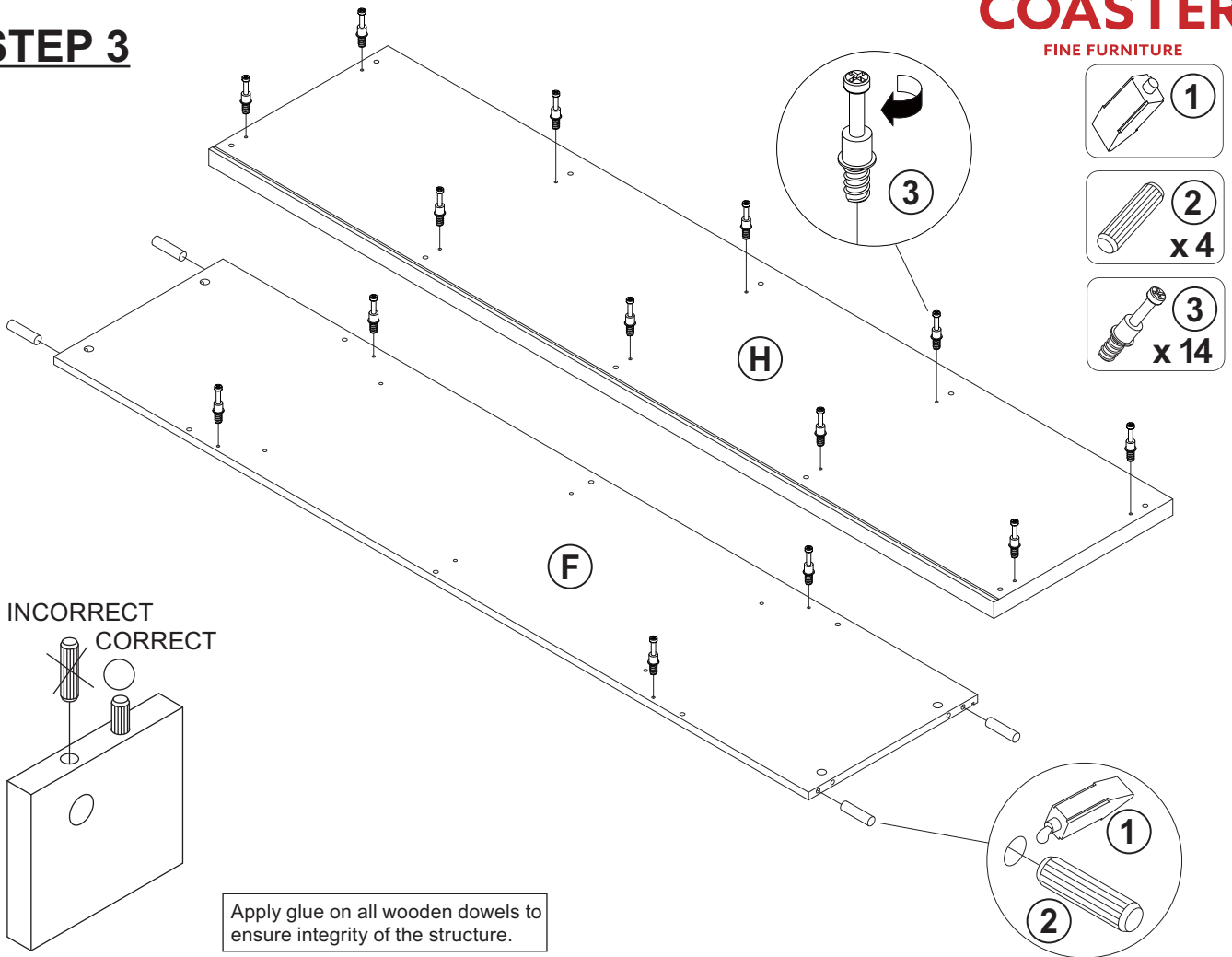
Apply glue on all wooden dowels to ensure integrity of the structure.

ITEM: 103895

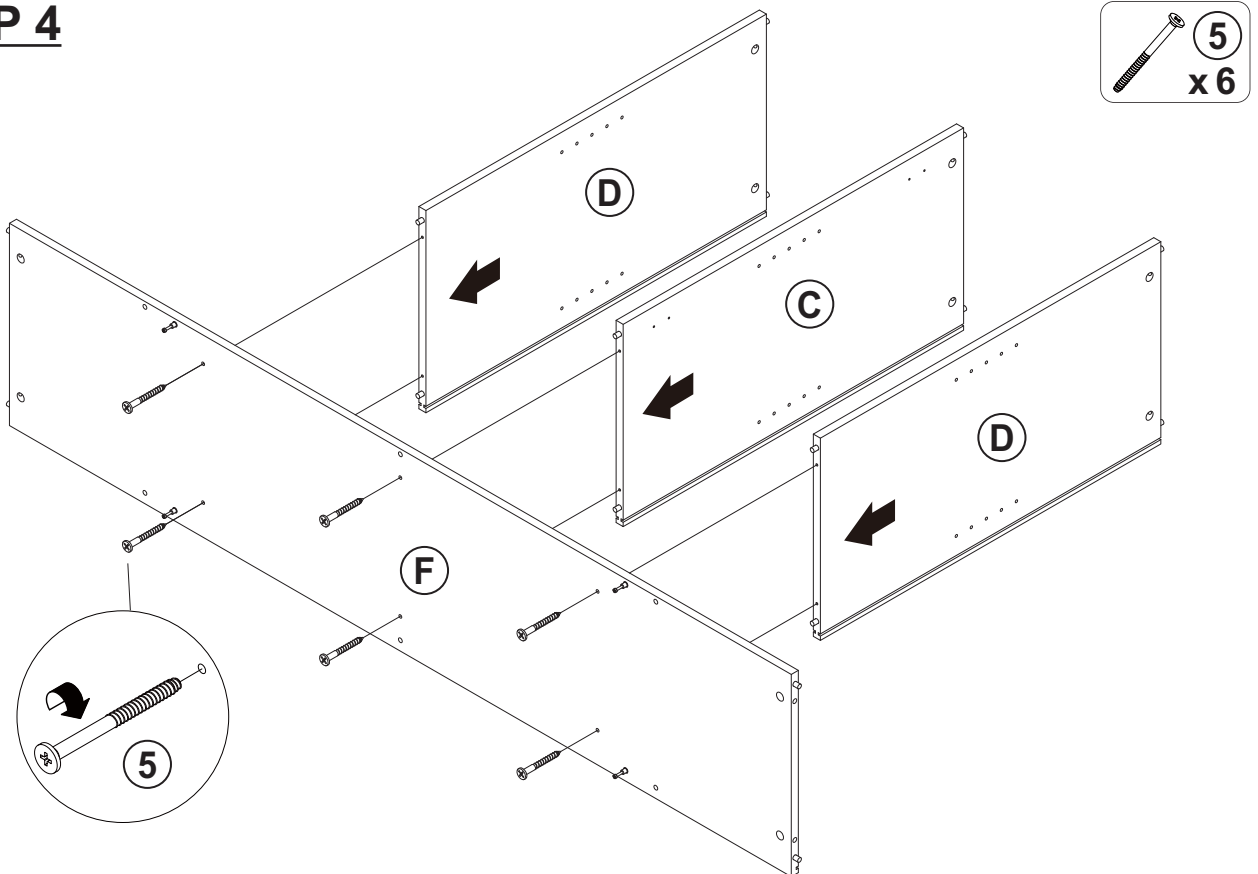
COASTER[®]

FINE FURNITURE

STEP 3

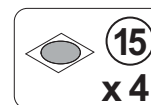
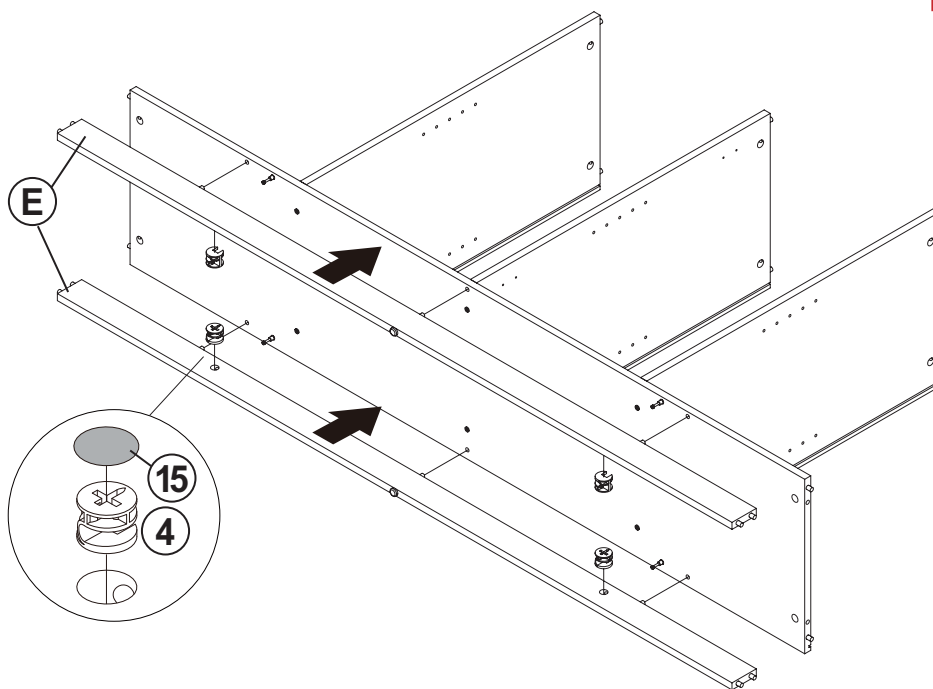
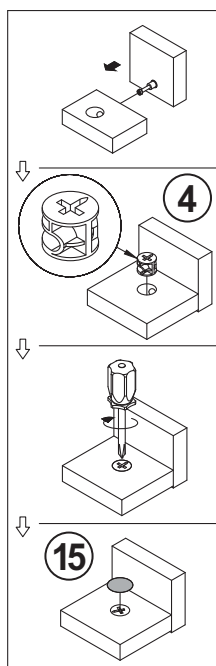


STEP 4

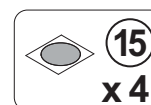
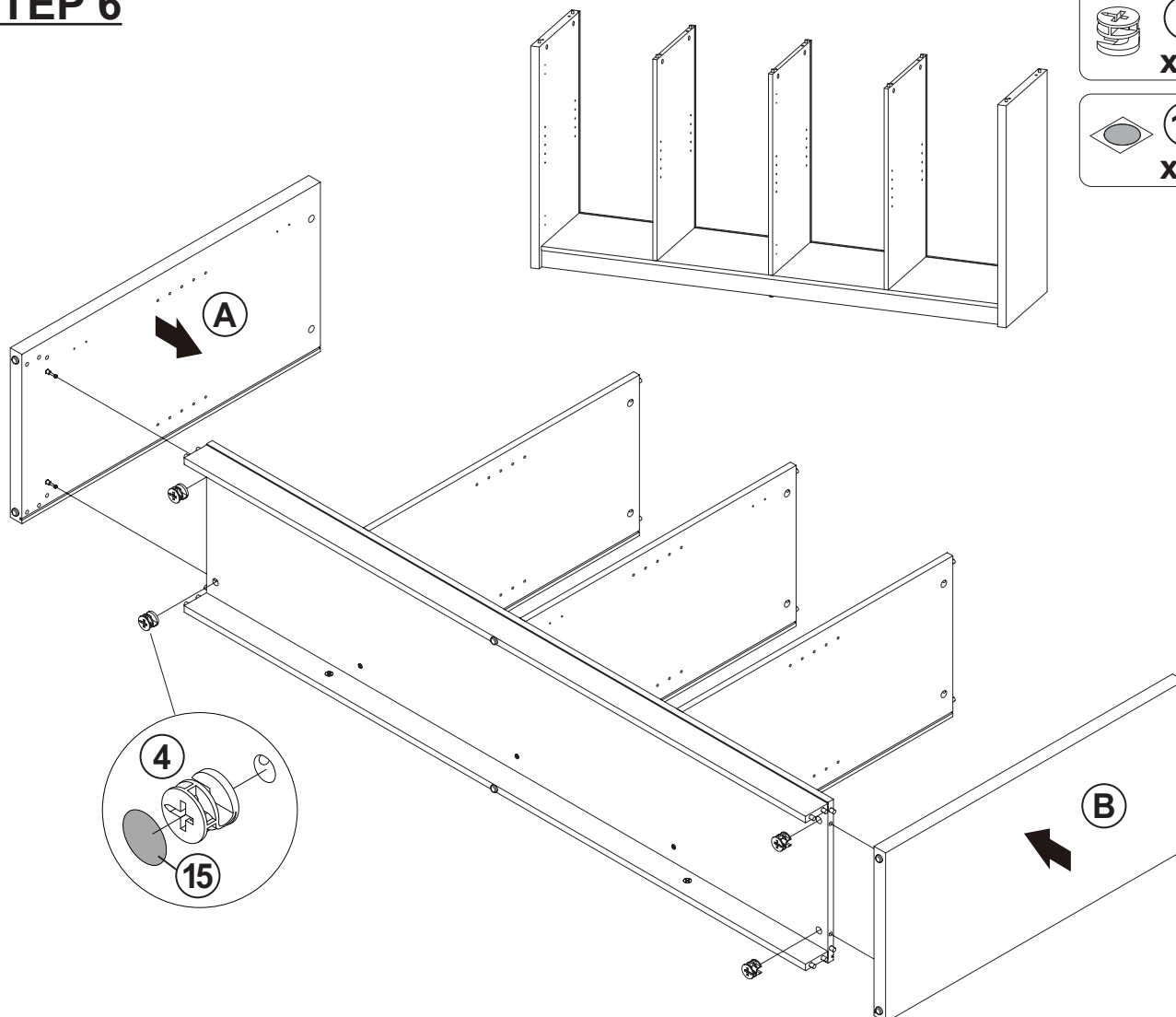


ITEM: 103895

STEP 5

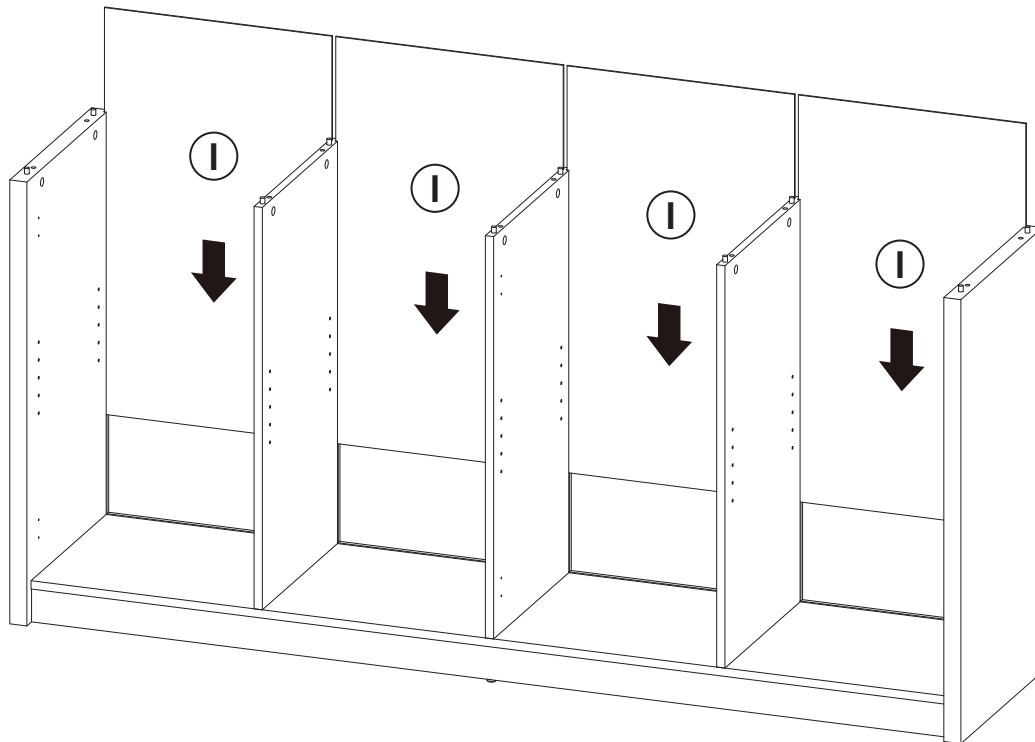


STEP 6

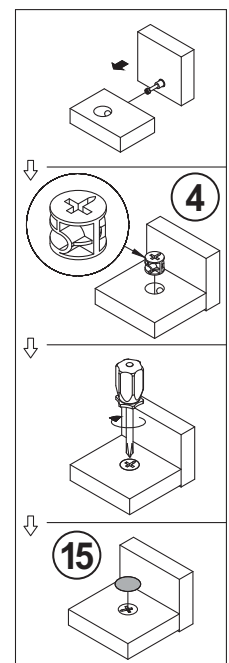
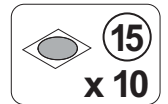
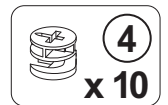
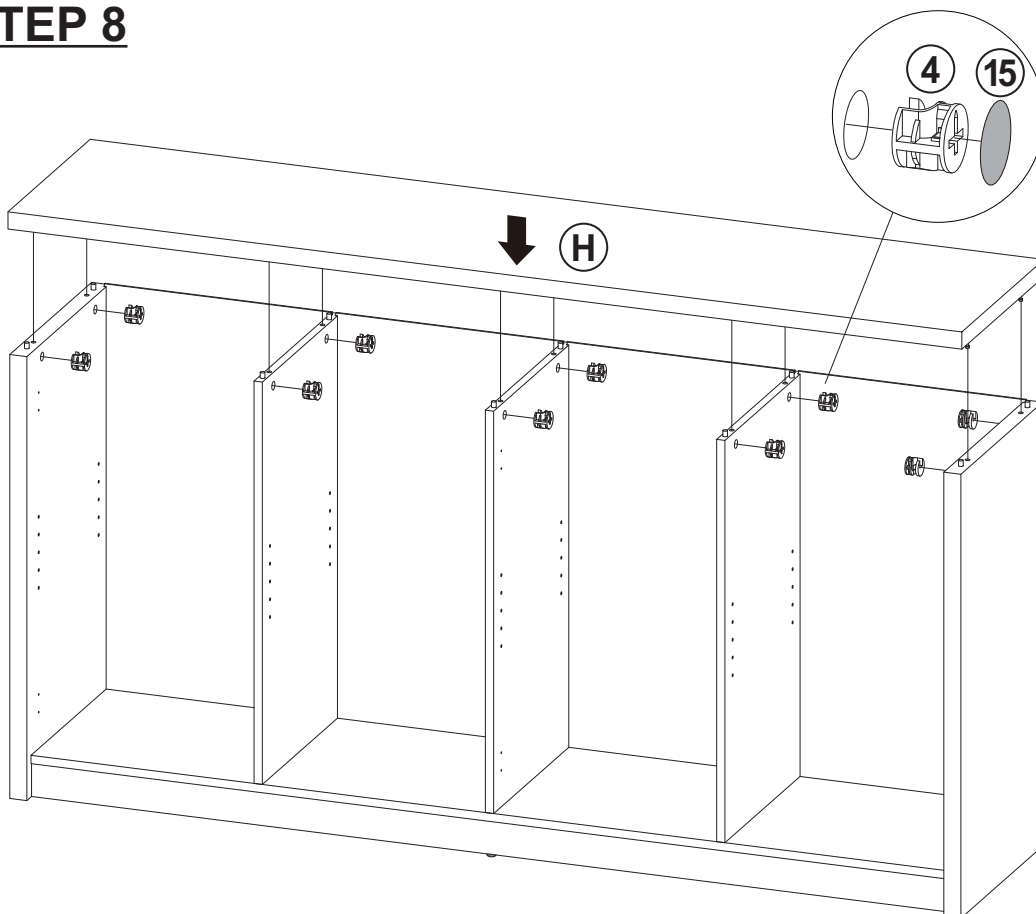


ITEM: **103895**

STEP 7



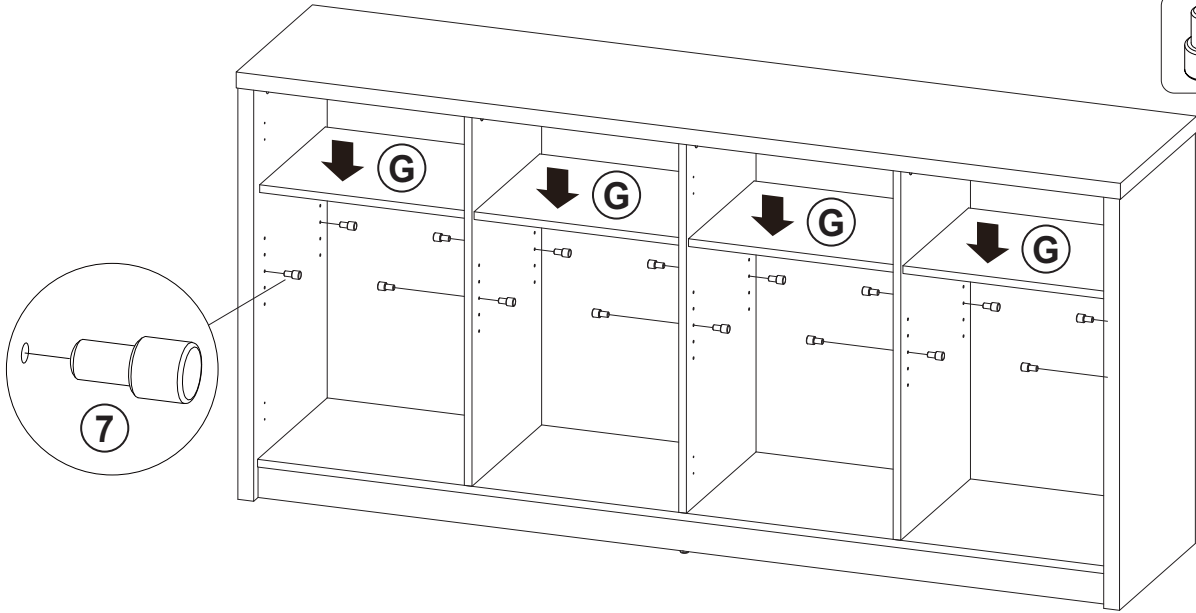
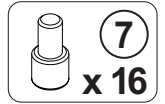
STEP 8



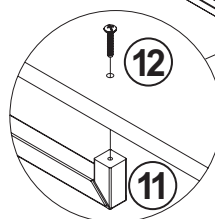
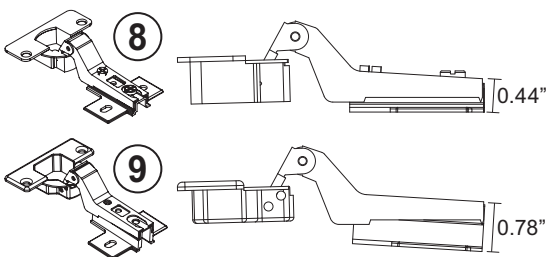
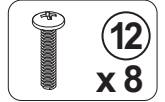
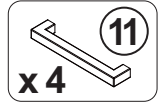
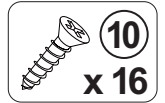
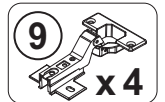
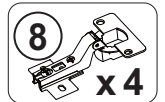
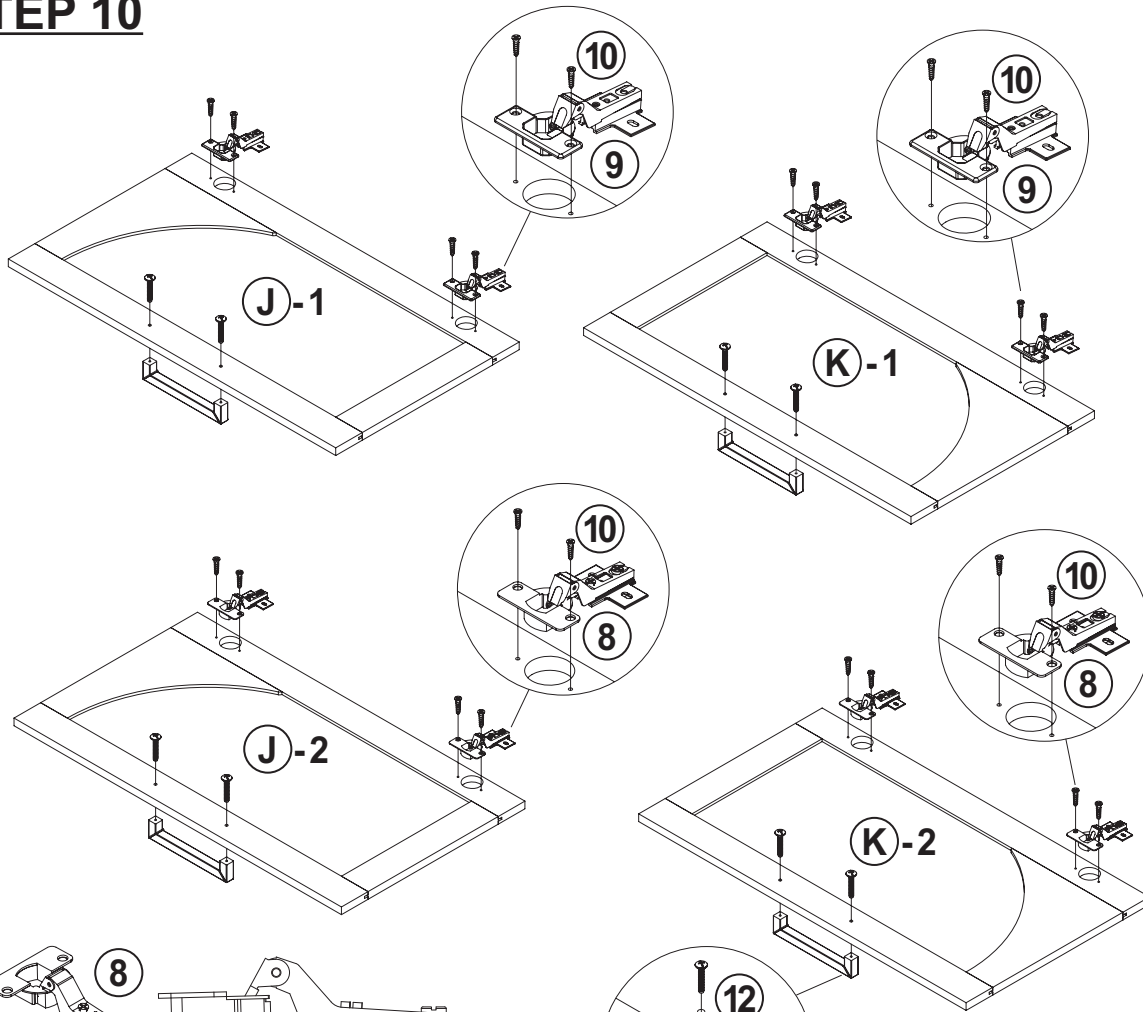
ITEM: 103895

COASTER
FINE FURNITURE

STEP 9



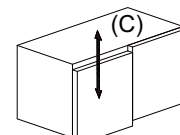
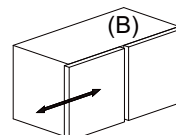
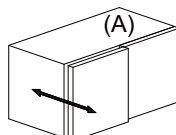
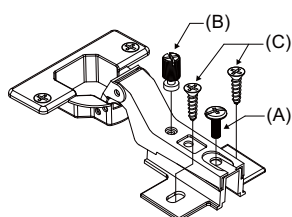
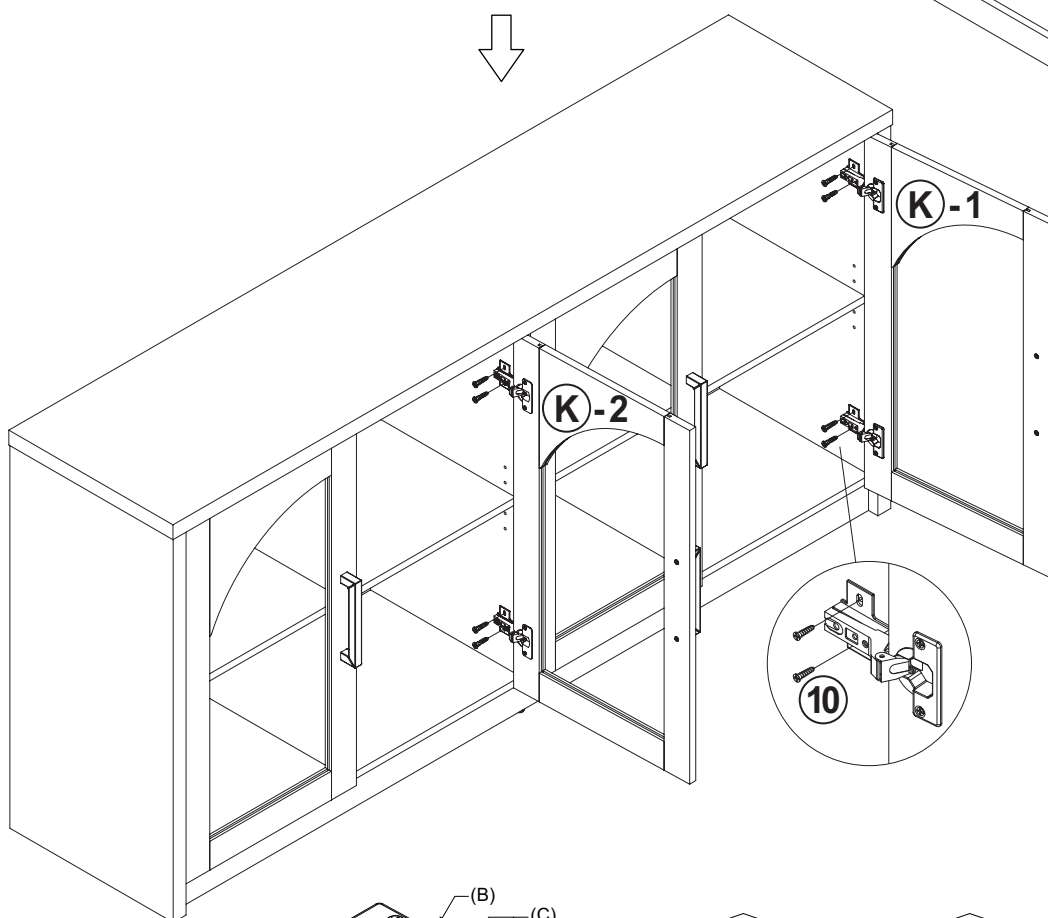
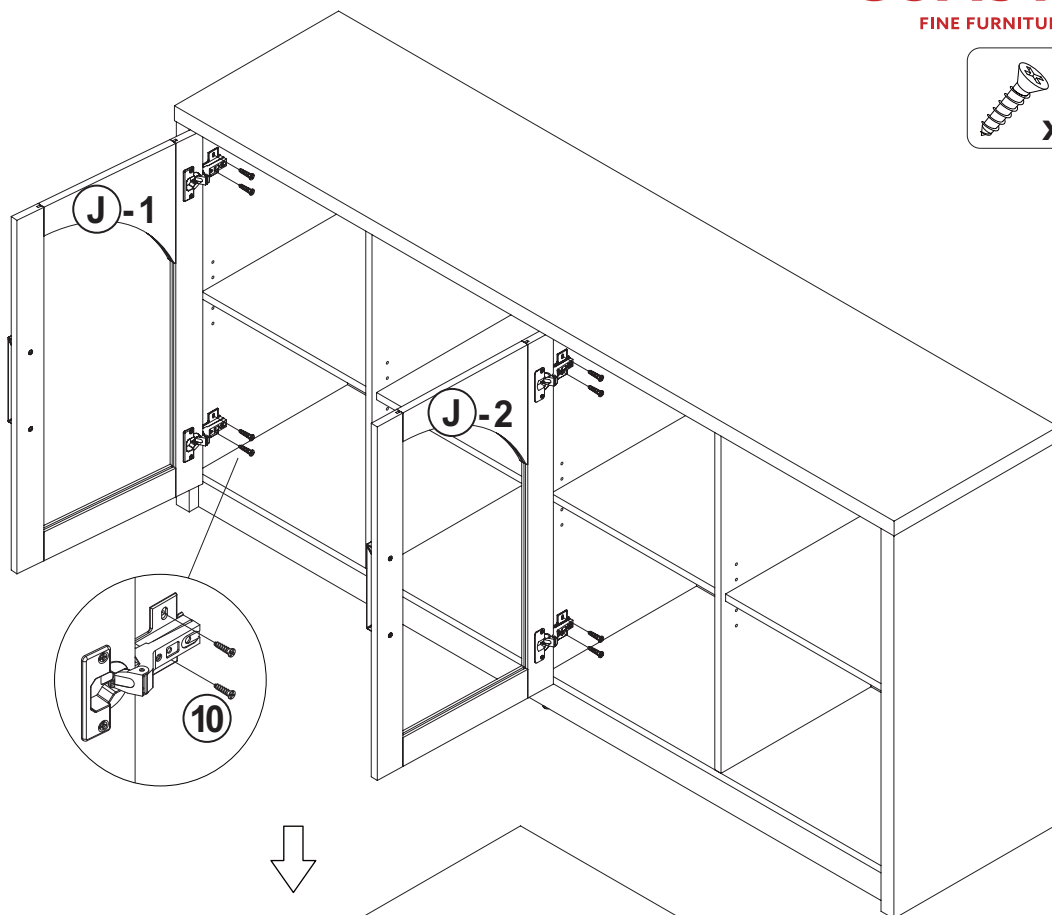
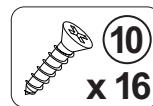
STEP 10



ITEM: **103895**

STEP 11

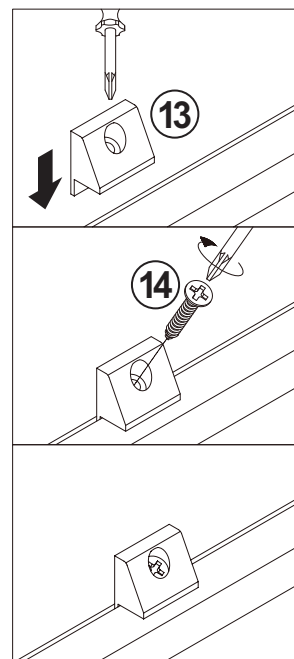
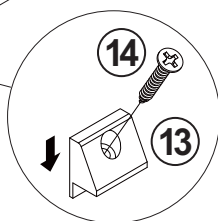
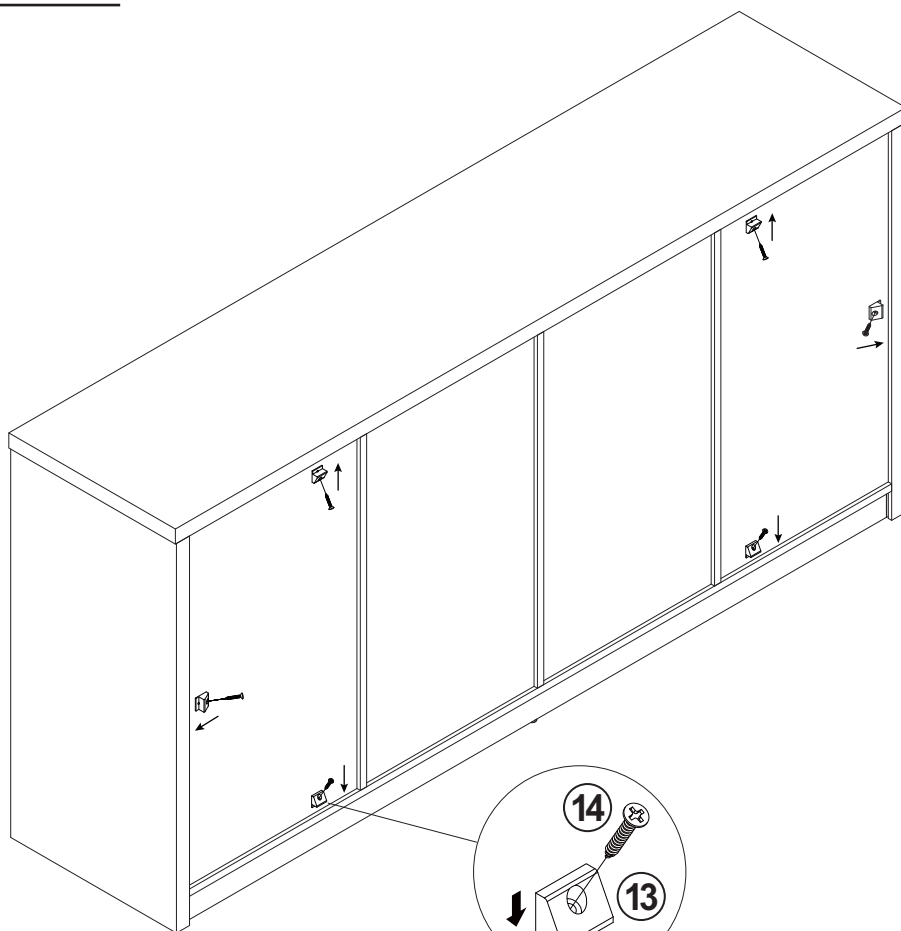
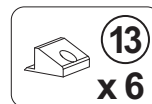
COASTER
FINE FURNITURE



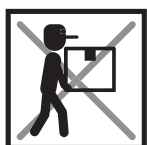
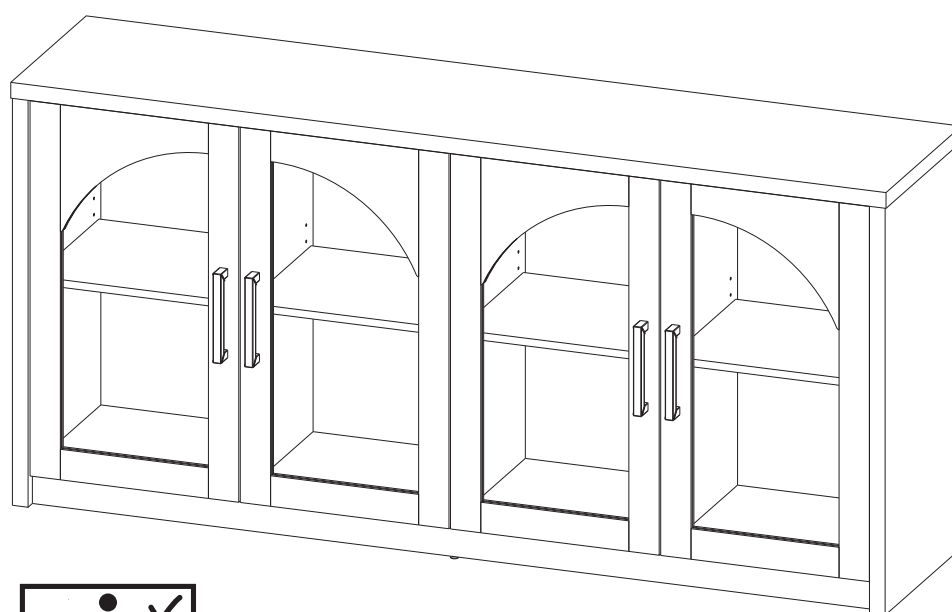
ITEM: **103895**

STEP 12

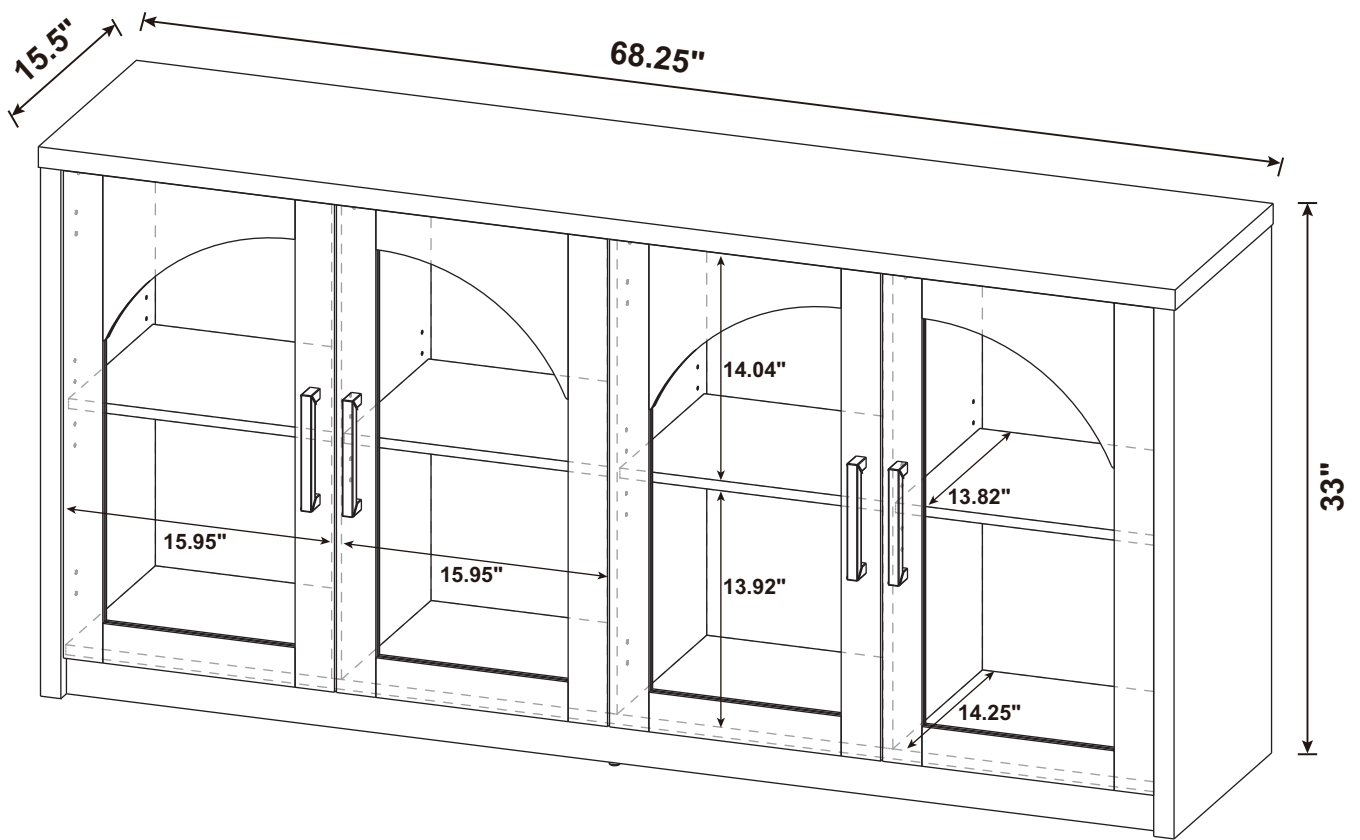
COASTER
FINE FURNITURE



STEP 13
COMPLETE



ITEM: 103895



ANTI-TIPPING INSTALLMENT INSTRUCTIONS FURNITURE TIPPING RESTRAINT

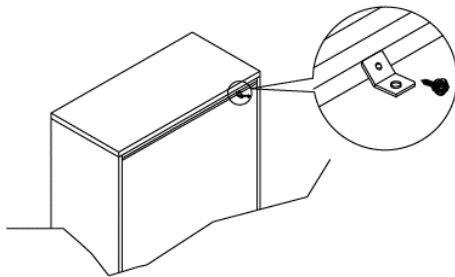
WARNING

Injury may result from tipping furniture.
This restraint may protect against tipping furniture.
Do not allow children to climb on furniture.
This restraint is not a substitute for proper adult supervision.
Failure to detach this restraint before moving the furniture may result in injury and damage.

This restraint must be screwed to a wood stud on the wall, using the long screw provided.

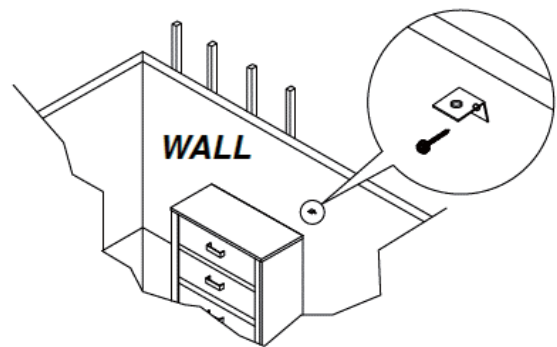
STEP 1

Secure the bracket to the back top of the unit, using the short screw provided, as shown in the drawing.



STEP 2

Locate the wood stud on the wall, and secure the other bracket, 2 inches below the back of the unit.



STEP 3

Place the furniture into position so both mounting brackets are vertically in line. Lace the end of the restraint strap through the larger hole in each mounting bracket. Bring both ends together and slide the flat end through the locking end, and drag it through, until the slack is removed. Ensure that the strap is securely laced and locked.

