

ASSEMBLY INSTRUCTIONS
COASTER FINE FURNITURE



Fine Furniture for every stage of life

800786
L-SHAPE DESK

ITEM:800786



ASSEMBLY INSTRUCTIONS

ASSEMBLY TIPS:

1. Remove hardware from box and sort by size.
2. Please check to see that all hardware and parts are present prior to start of assembly.
3. Please follow attached instructions in the same sequence as numbered to assure fast & easy assembly.



WARNING!

1. Don't attempt to repair or modify parts that are broken or defective. Please contact the store immediately.
2. This product is for home use only and not intended for commercial establishments.



ASSEMBLY TIME

80 MINUTES

PARTS IDENTIFICATION

A	FILE CABINET LEFT SIDE PANEL		1 PC	I	LARGE DRAWER RIGHT SIDE PANEL		1 PC
B	FILE CABINET RIGHT SIDE PANEL		1 PC	J	SMALL DRAWER BOTTOM PANEL		2 PCS
C	FILE CABINET BOTTOM PANEL		1 PC	K	SMALL DRAWER FRONT PANEL		2 PCS
D	FILE CABINET TOP PANEL		1 PC	L	SMALL DRAWER BACK PANEL		2 PCS
E	FILE CABINET BACK PANEL		1 PC	M	SMALL DRAWER LEFT SIDE PANEL		2 PCS
F	LARGE DRAWER FRONT PANEL		1 PC	N	SMALL DRAWER RIGHT SIDE PANEL		2 PCS
G	LARGE DRAWER BACK PANEL		1 PC	O	SHELF BACK PANEL		1 PC
H	LARGE DRAWER LEFT SIDE PANEL		1 PC	P	SHELF FRONT PANEL		1 PC

NOTE:

Phillips head screw driver is required in the assembly process; however, manufacturer does not provide this item.

ITEM: 800786

Q	SHELF BOTTOM PANEL		1 PC	U	SMALL ADJUSTABLE SHELF		2 PCS
R	SHELF TOP PANEL		1 PC	V	DESK TOP PANEL		1 PC
S	LARGE ADJUSTABLE SHELF		1 PC	A1	CONNECTING PANEL		2 PCS
T	DIVIDER PANEL		2 PCS	B1	LARGE DRAWER BOTTOM PANEL		1 PC

HARDWARE IDENTIFICATION

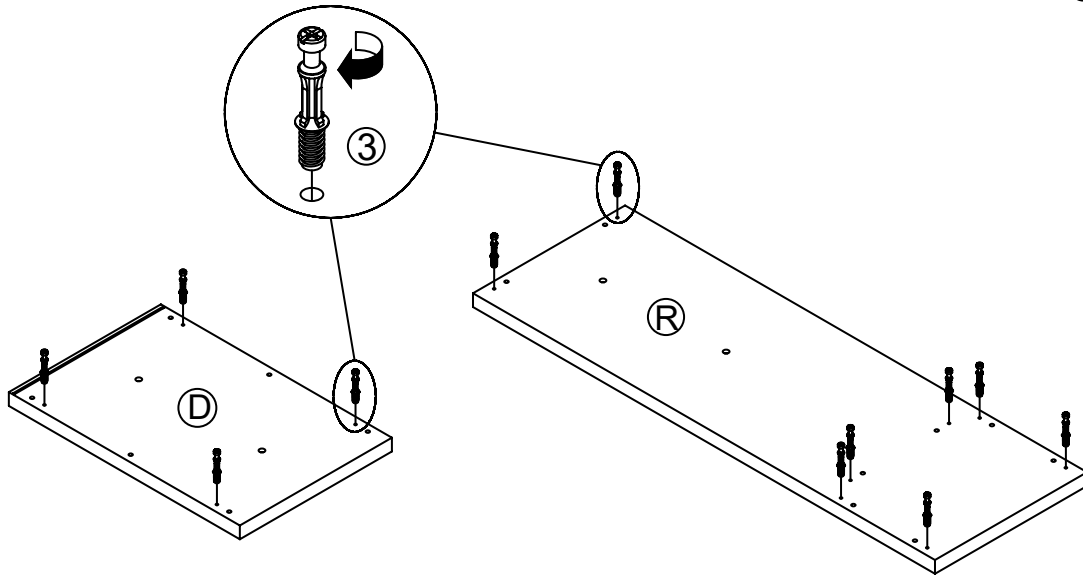
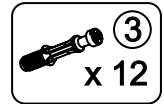
Z NO	DESCRIPTION	FIGURE	Q'TY	Z NO	DESCRIPTION	FIGURE	Q'TY
1	GLUE 40g		1 PC	10	SMALL RAIL L = 400mm WHT		2 SET
2	WOODEN DOWEL Ø 8x30mm		34 PCS	11	SHORT SCREW Ø 3x12mm SR		42 PCS
3	CAM BOLT Ø 7x35.5mm SR		18 PCS	12	FOOT 50x50x18mm		9 PCS
4	CAM LOCK Ø 15x12mm SR		18 PCS	13	SCREW FOR FOOT Ø 5x23mm BLK		18 PCS
5	LONG SCREW Ø 4.3x35mm SR		20 PCS	14	SHORT BOLT M6x42mm SR		4 PCS
6	LONG BOLT Ø 9.5x55mm FOR BOTTOM PANEL SR		14 PCS	15	STICKER Ø 20mm		3 PCS
7	PIN Ø 4.9x8mm SR		12 PCS	16	LARGE RAIL L = 450mm WHT		1 SET
8	HANDLE L = 120mm		3 PCS	17	IRON BAR Ø 9.5x289.5mm SR		2 PCS
9	HANDLE BOLT Ø 4x28mm SR		6 PCS				

Z8,Z9,Z10,Z12,Z16,Z17 not included in blister packaging.

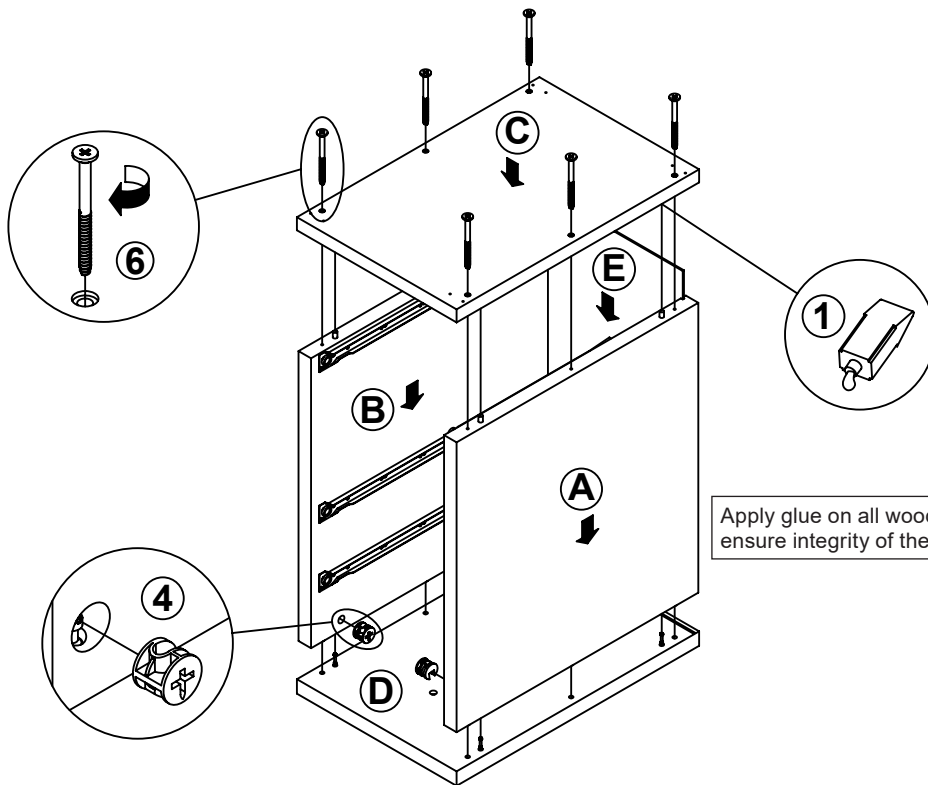
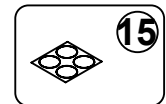
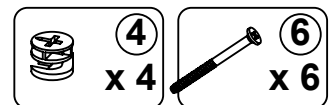
ITEM: 800786

COASTER
FINE FURNITURE

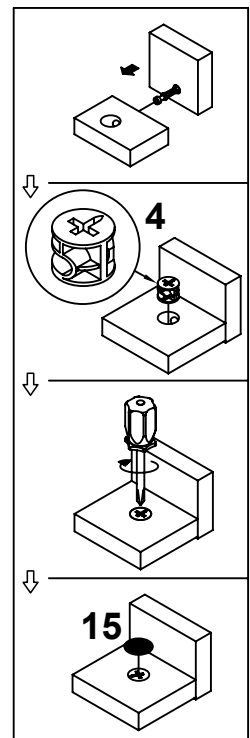
STEP 3



STEP 4

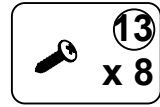
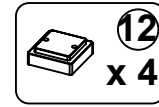
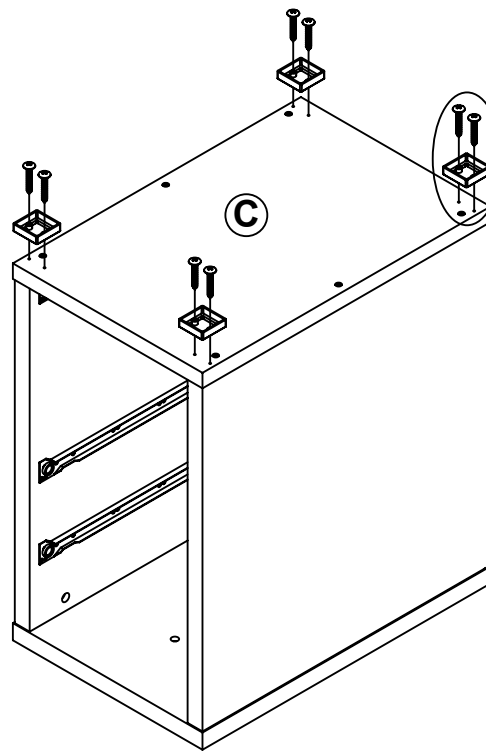


Apply glue on all wooden dowels to ensure integrity of the structure.

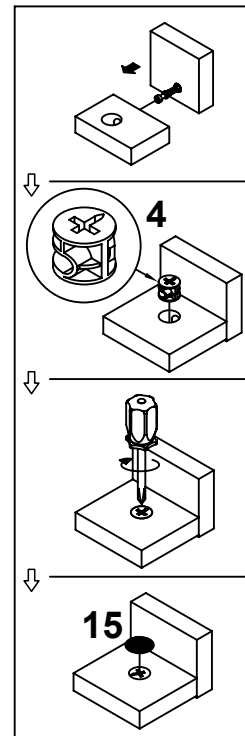
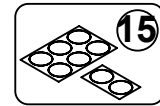
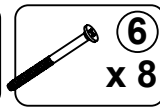
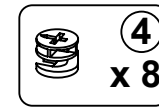
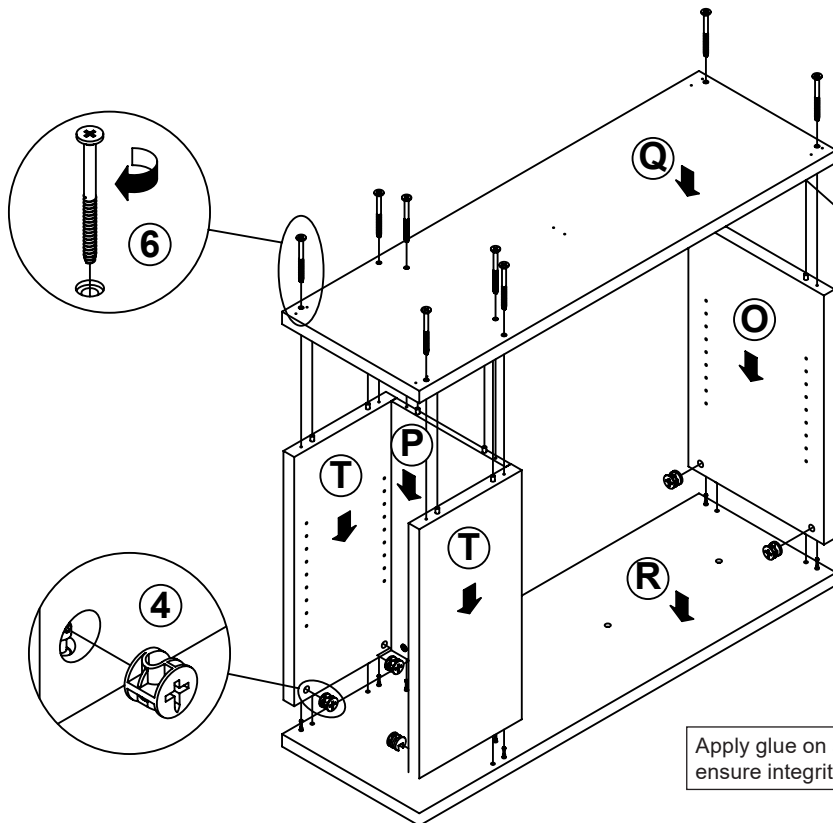


ITEM: 800786

STEP 5



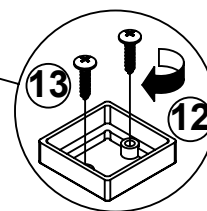
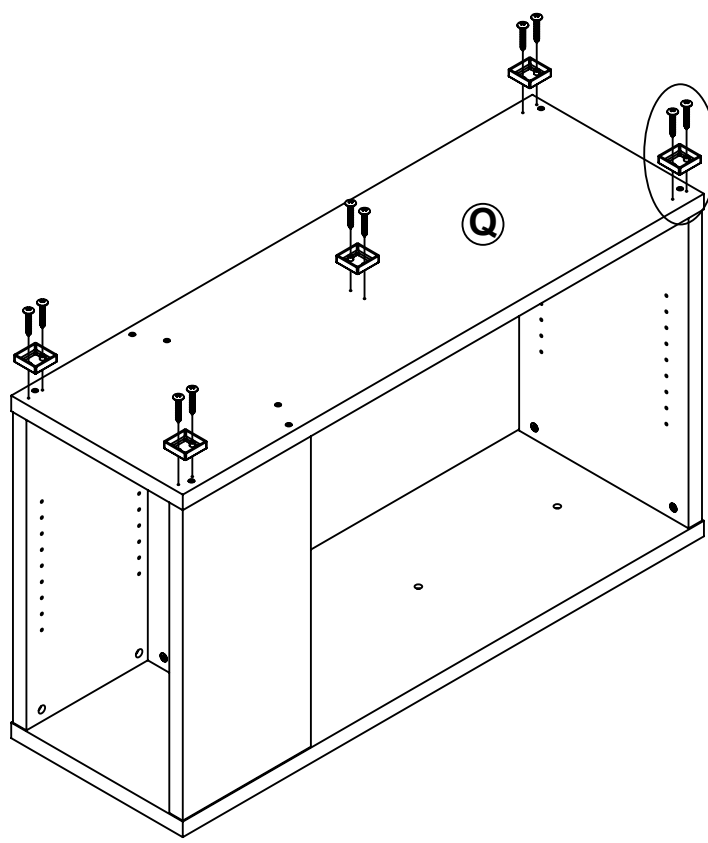
STEP 6



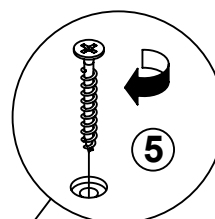
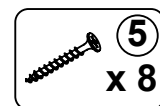
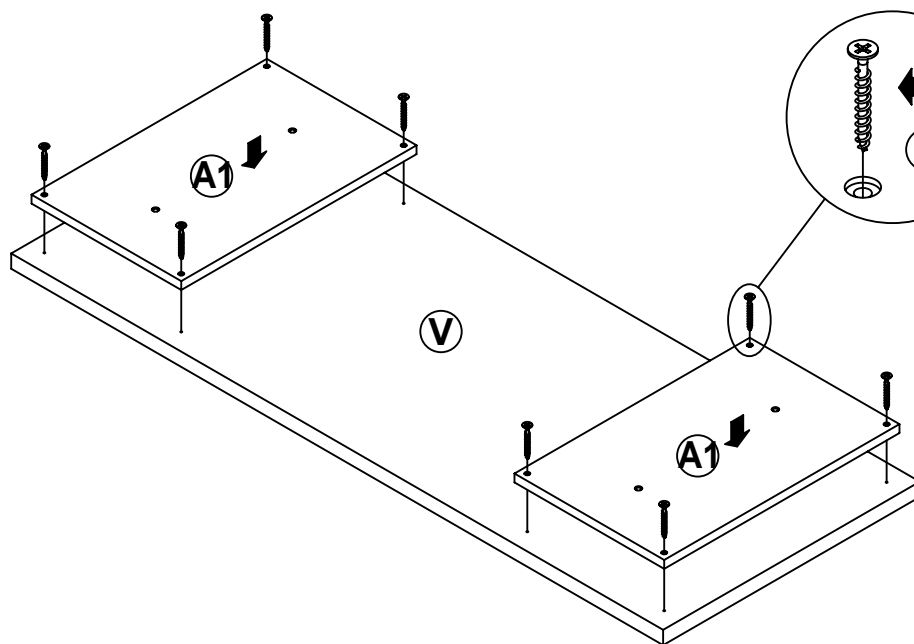
Apply glue on all wooden dowels to ensure integrity of the structure.

ITEM: 800786

STEP 7



STEP 8

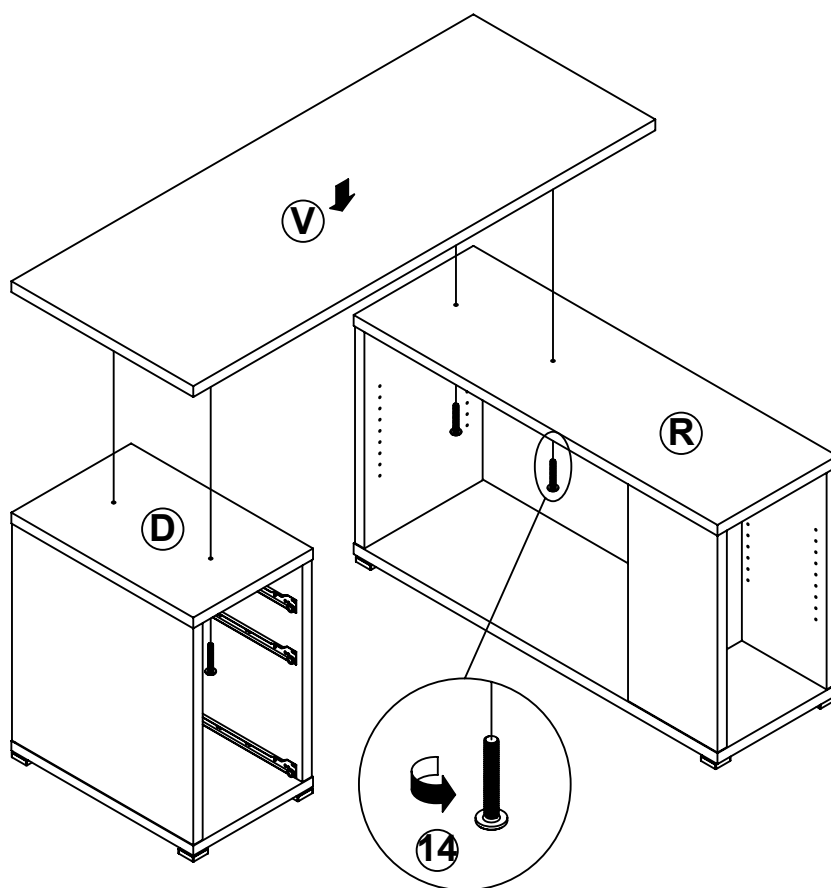
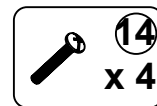


ITEM: 800786

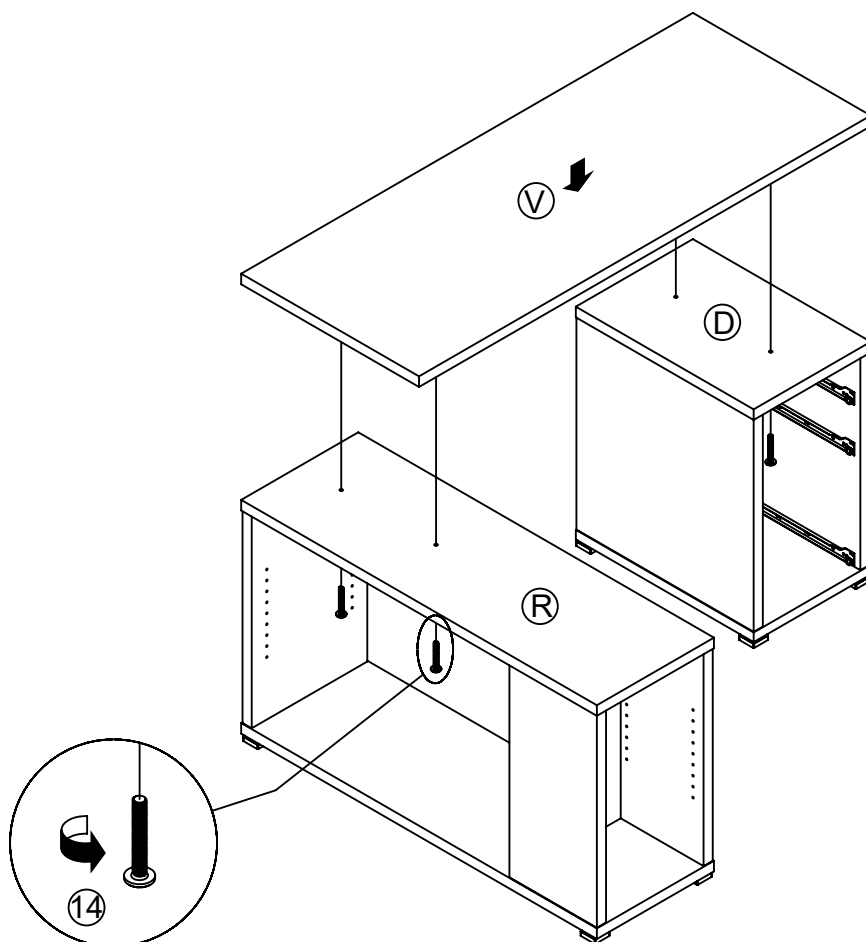
COASTER
FINE FURNITURE

STEP 9

LEFT



RIGHT

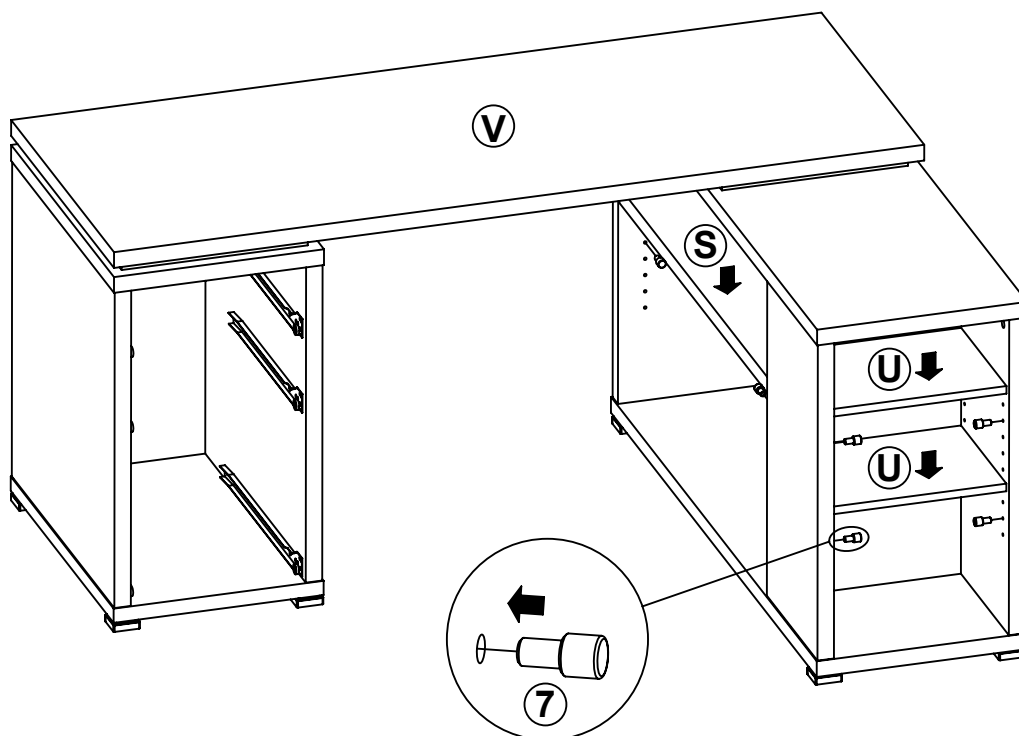
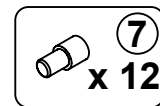


ITEM: 800786

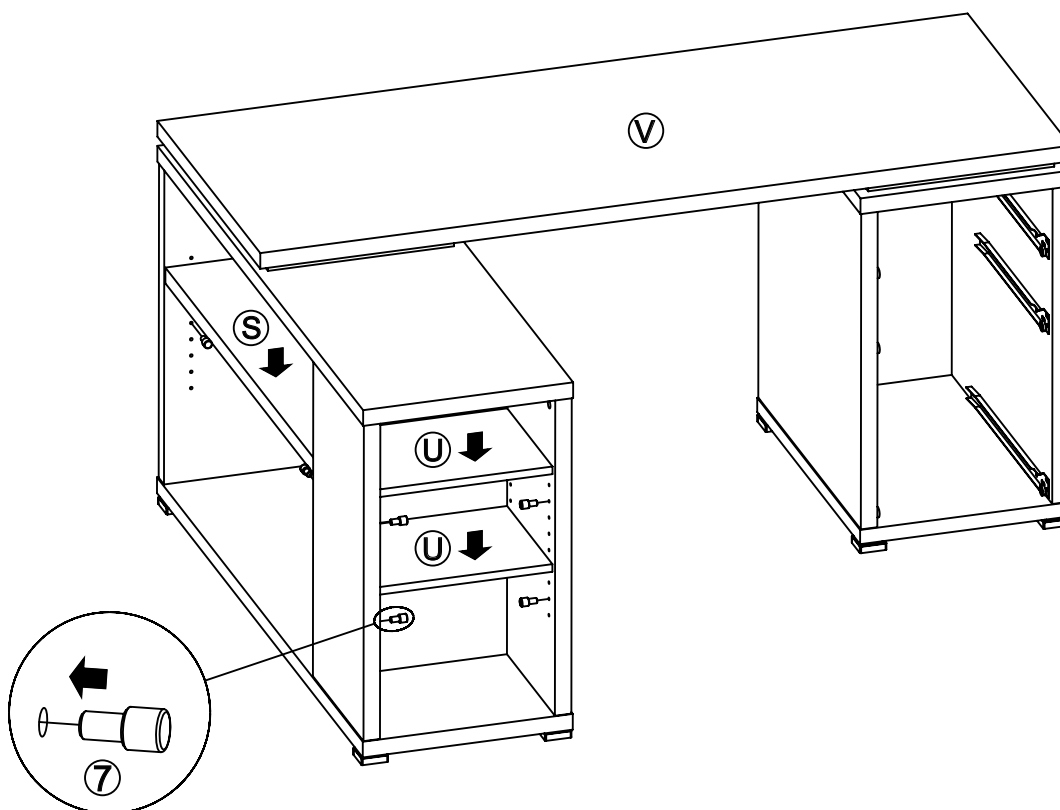
COASTER
FINE FURNITURE

STEP 10

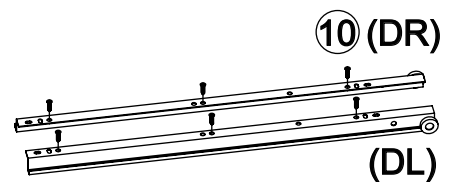
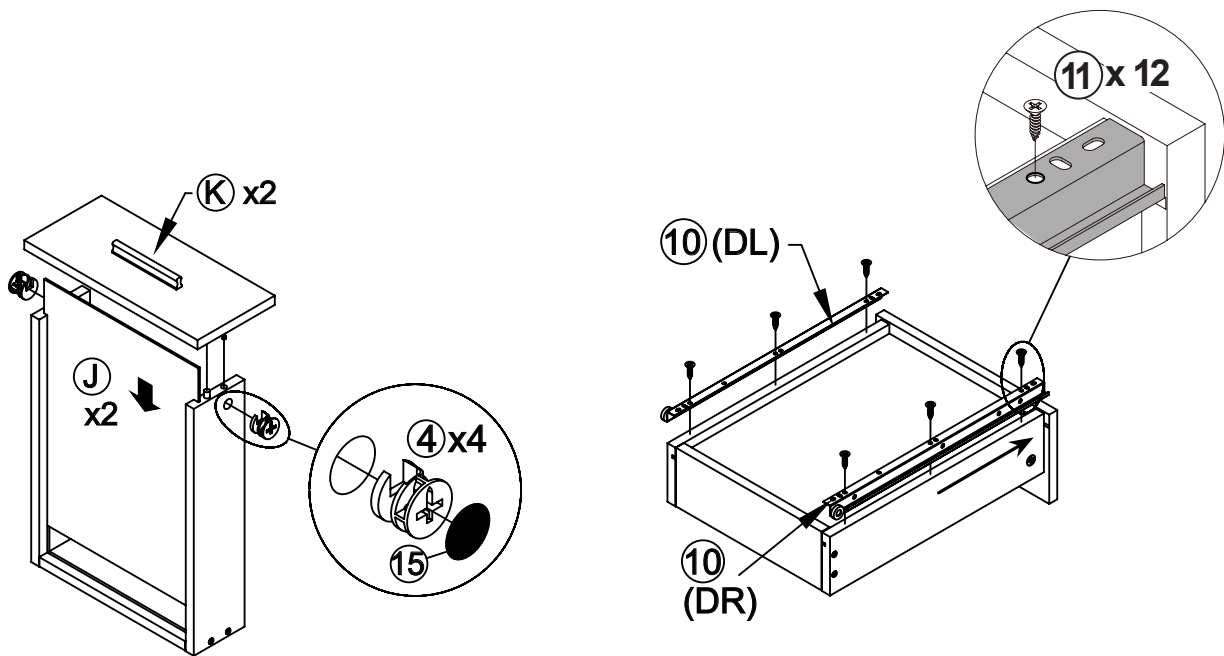
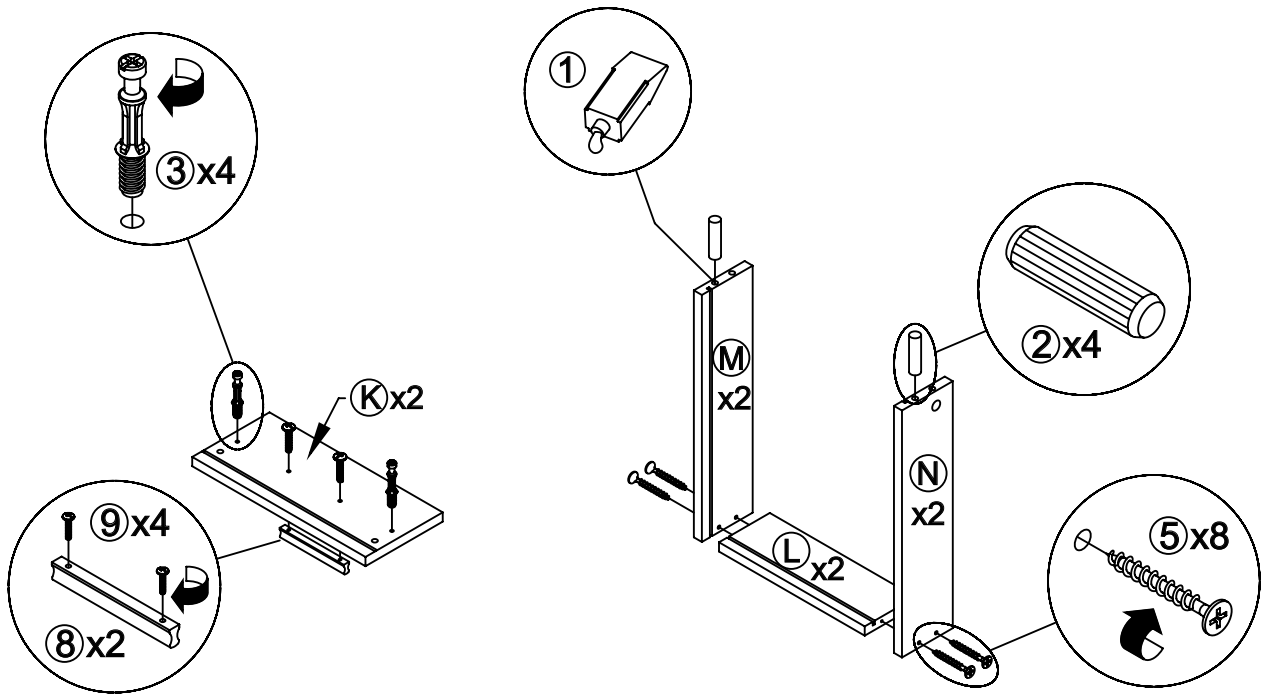
LEFT



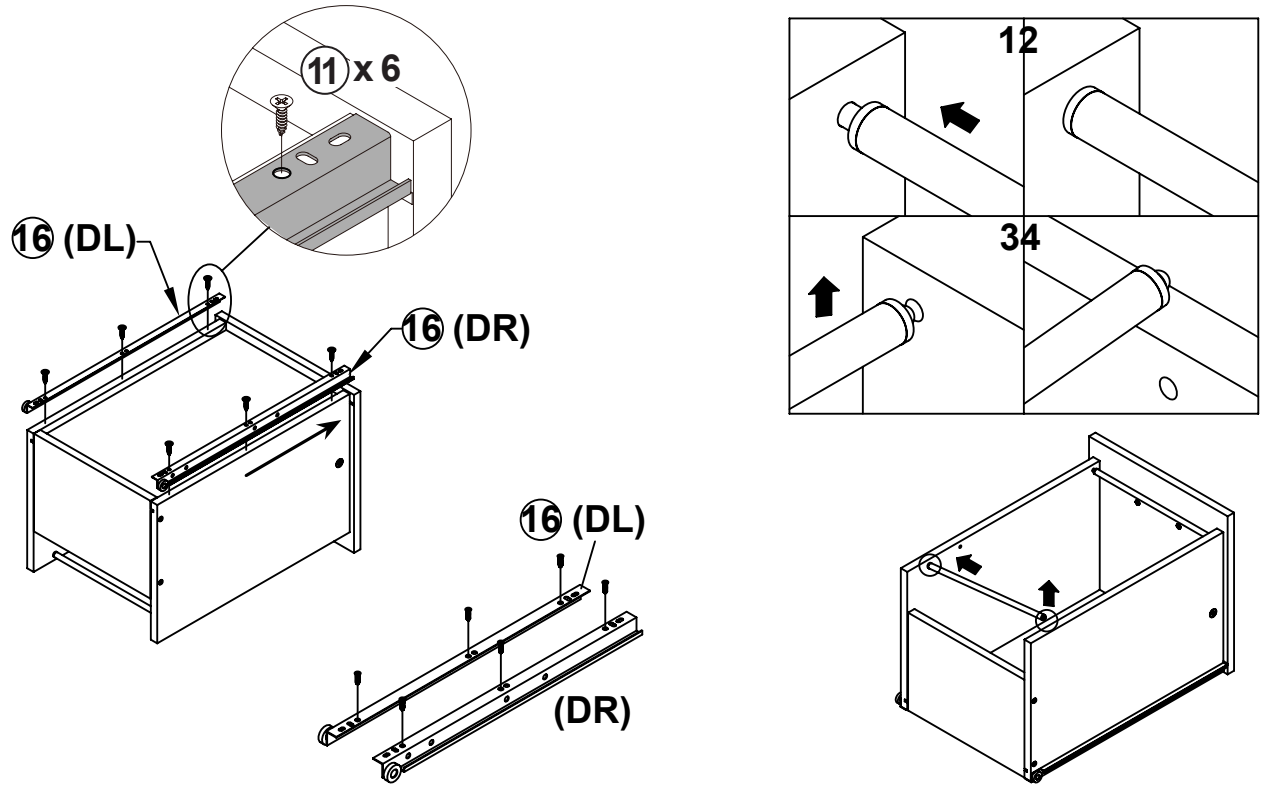
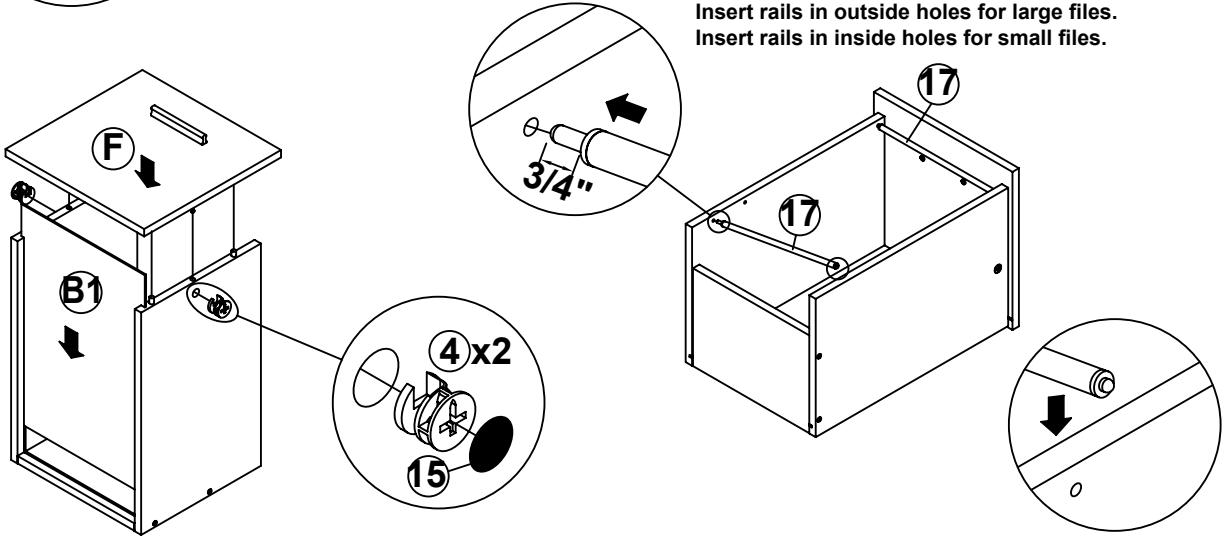
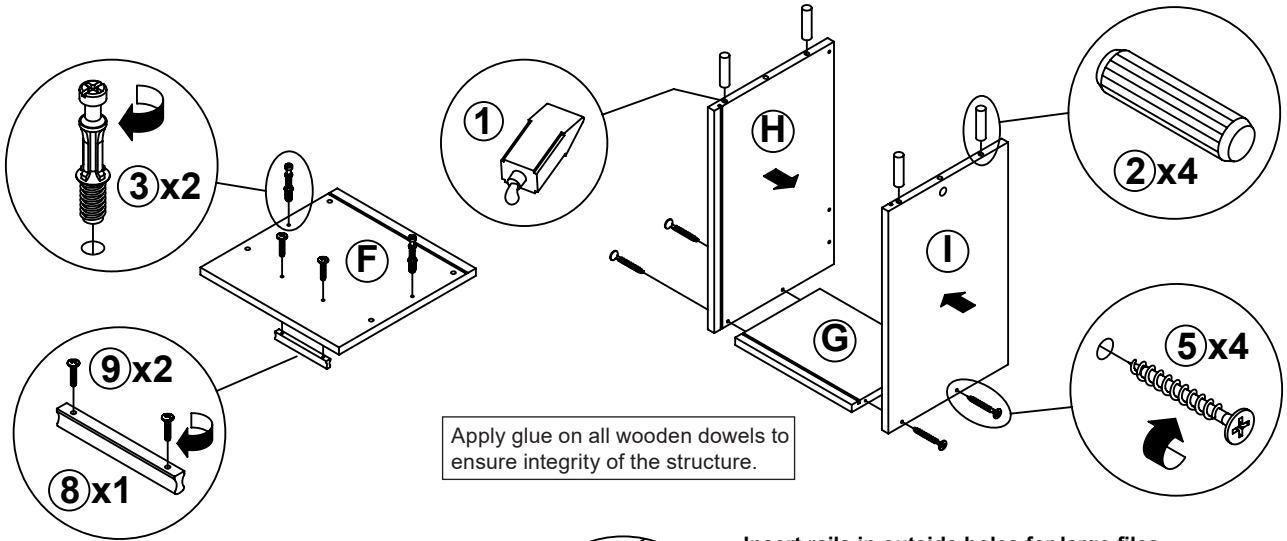
RIGHT



STEP 11

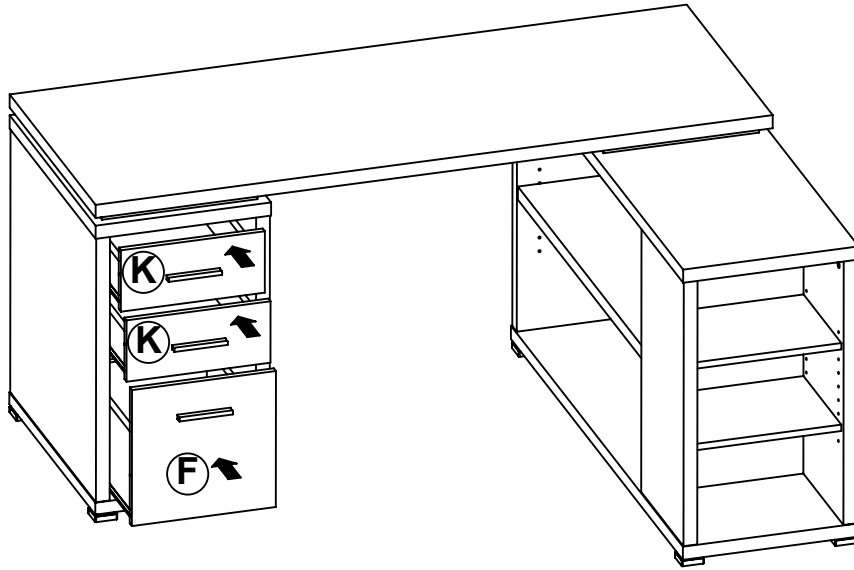


STEP 12

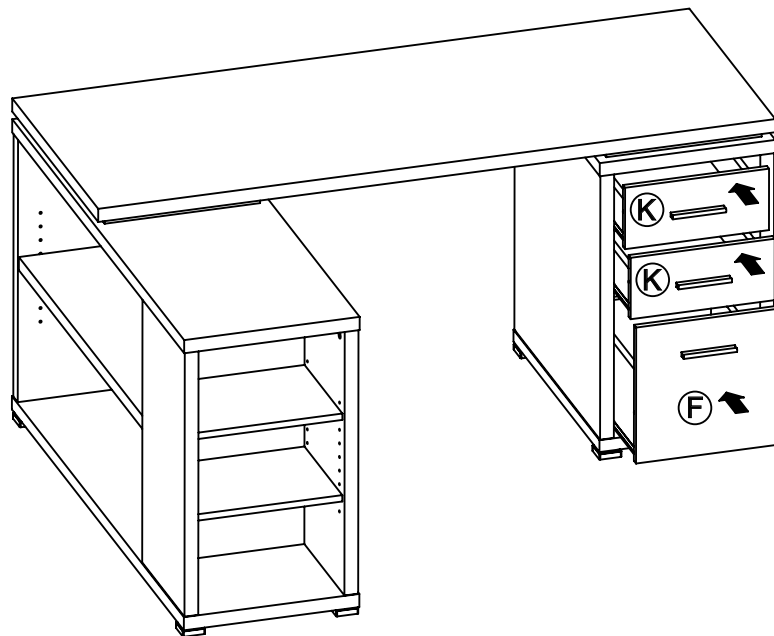


ITEM: 800786

STEP 13
LEFT

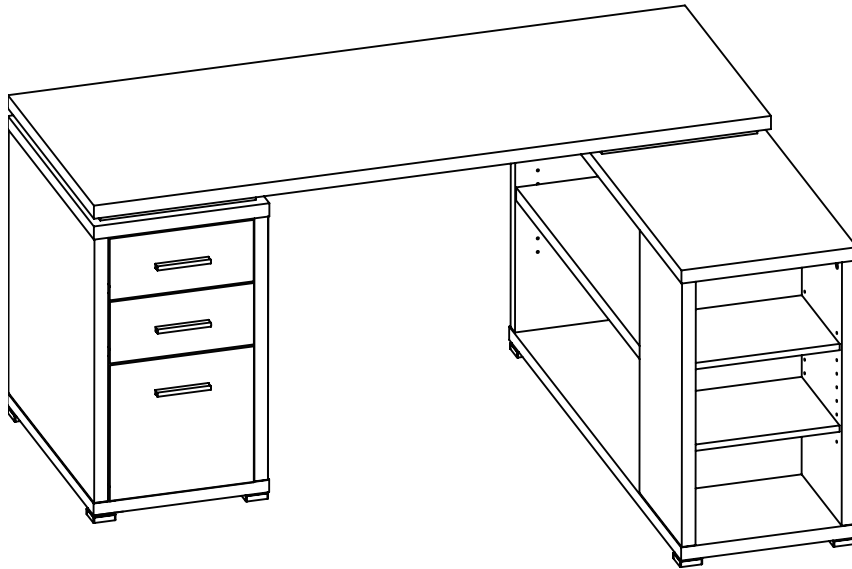


RIGHT

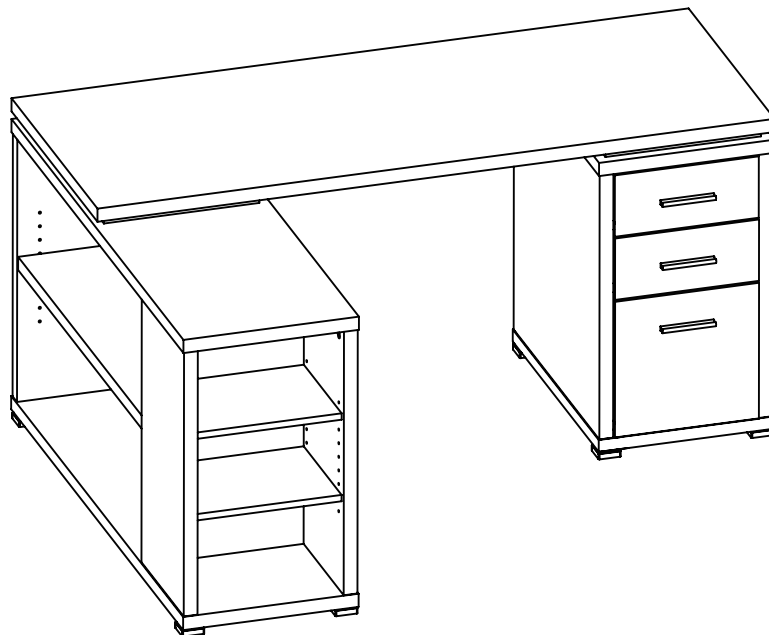


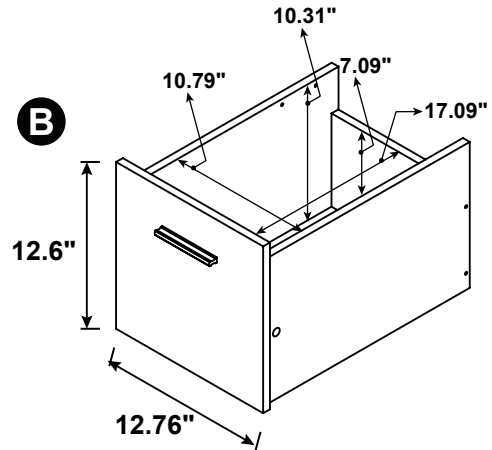
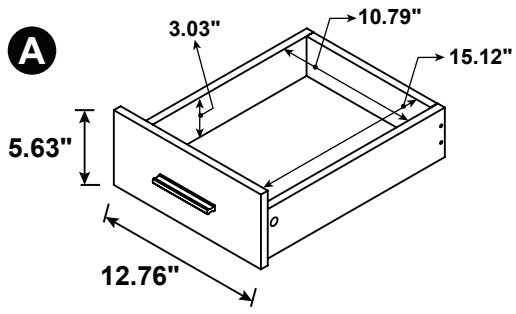
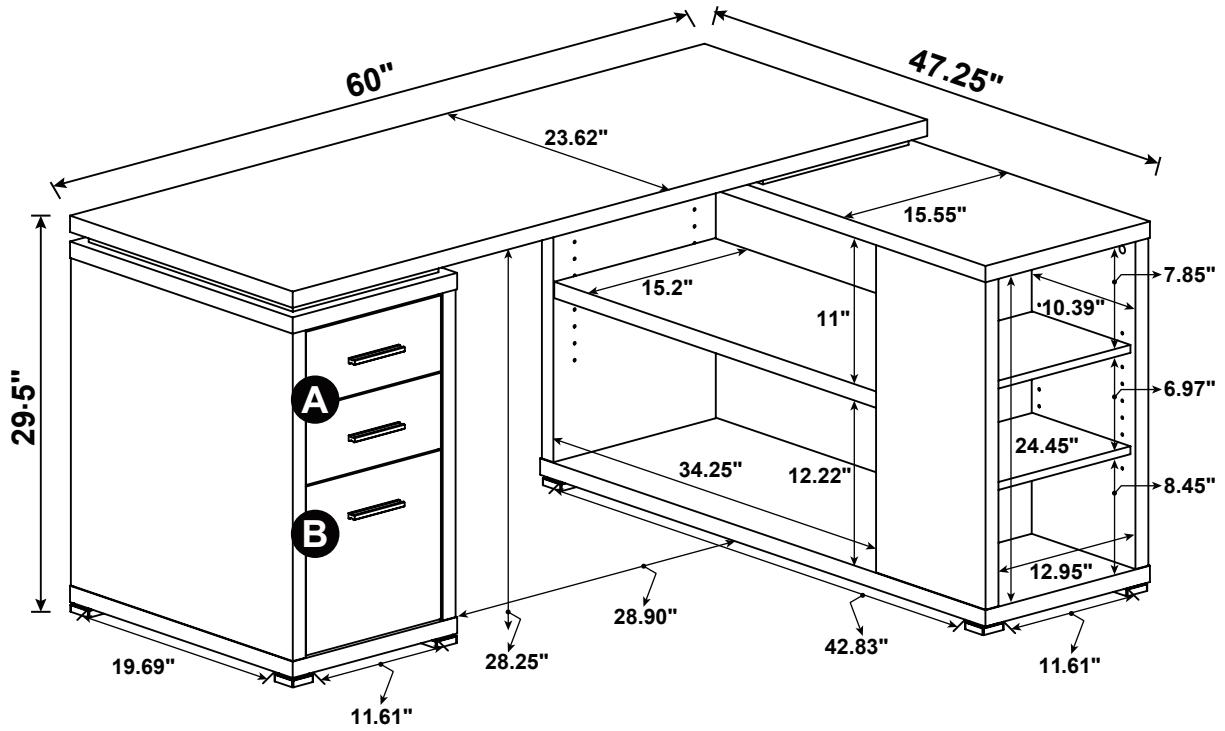
ITEM: 800786

STEP 14
COMPLETE
LEFT



COMPLETE
RIGHT





Note : Dimension tolerance $\pm 5\%$