

Assembly Instructions

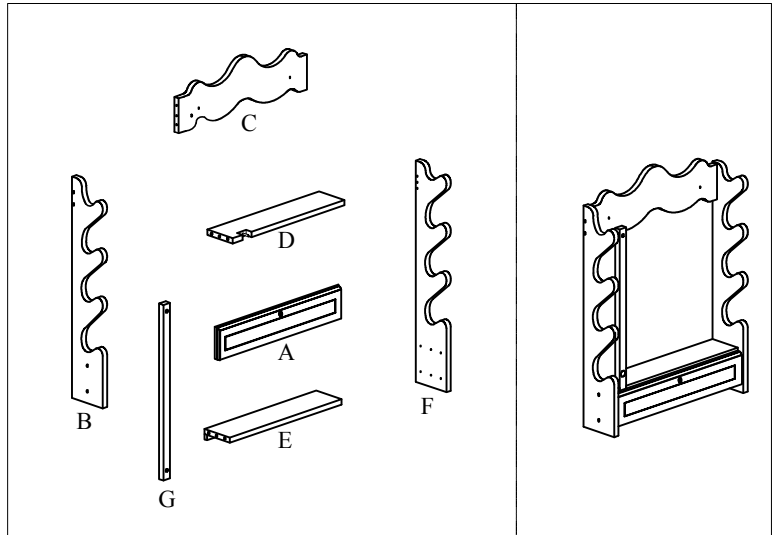


840 Gun Rack

Components List:

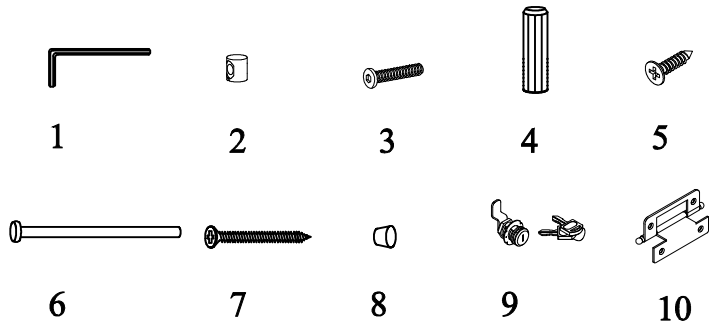
Upper Cabinet

- A. Drawer Front Panel.....1pc
- B. Left Barrel Rest.....1pc
- C. Upper Back Rail.....1pc
- D. Drawer Top Panel.....1pc
- E. Drawer Bottom Panel.....1pc
- F. Right Barrel Rest.....1pc
- G. Lock Bar.....1pc



Hardware List:

- 1. "L"Wrench1pc
- 2. Metal Bullet.....8pcs
- 3. Machine Screw.....8pcs
- 4. Dowel.....10pcs
- 5. Flat Head Wood Screw8pcs
- 6. Support Pin..... 1pc
- 7. Screw4pcs
- 8. Wood Plug.....8pcs
- 9. Keys.....1pc
- 10. Hinges.....2pcs



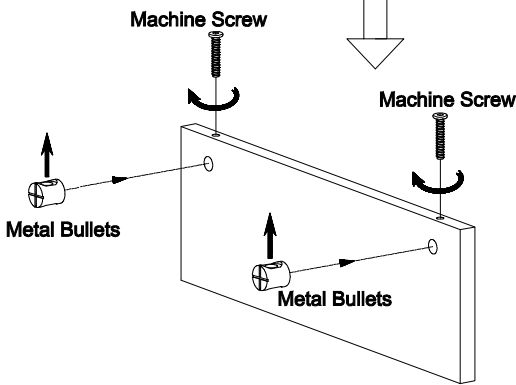
Post Office Box 111 - Webb City, Missouri 64870 - 0111
 Toll Free - 888 - 673 - 9080
 Fax - 417 - 673 - 9081

To order replacement parts online please visit:
www.AmericanFurnitureClassics.com
 or E - mail :
service@americanfurnitureclassics.com

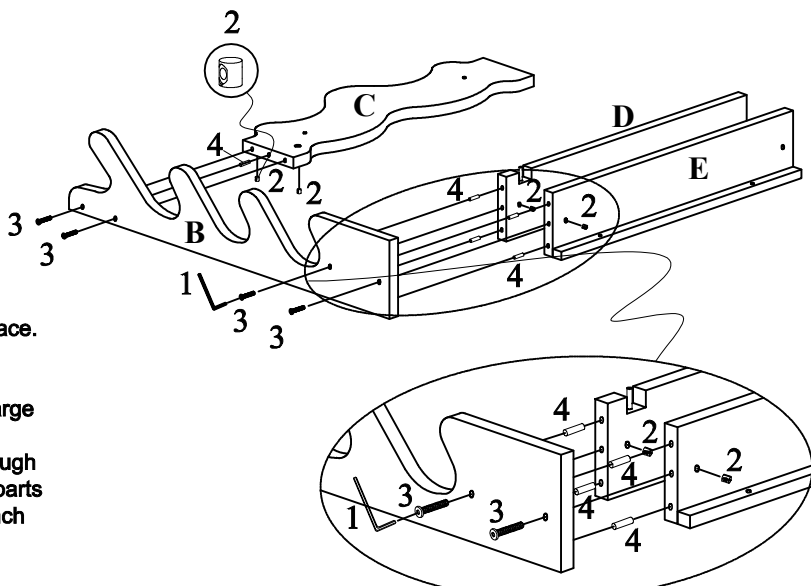
Assembly Instructions: 840 Gun Rack

Unpack carton on a clean, smooth surface and inventory parts.

Important: Always Insert Metal Bullets so that the X in the end of the Bullet faces out of the holes and that the Threaded Hole is turned vertically for alignment with Machine Screws.

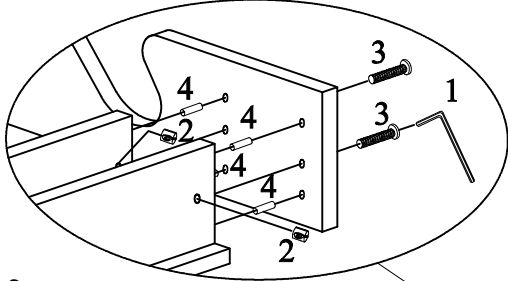


Step 1

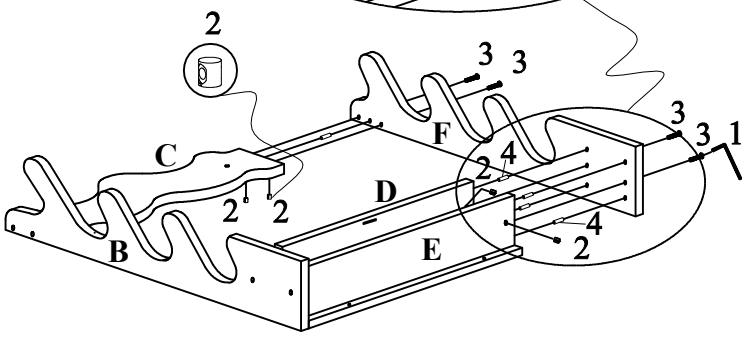


Step 1:
Place Left Barrel Rest (B) down on a clean, smooth surface. Attach Upper Back Rail (C), Drawer Top Panel (D) and Drawer Bottom Panel (E) by inserting Dowel (4) into the non-threaded holes. Insert the Metal Bullet (2) into the large holes in Upper Back Rail (C), Drawer Top Panel (D) and Drawer Bottom Panel (E). Insert Machine Screw (3) through Left Barrel Rest (B) and into Metal Bullet (2) inserted in parts C, D & E. Tighten the Machine Screw (3) using "L" Wrench (1).

Step 2

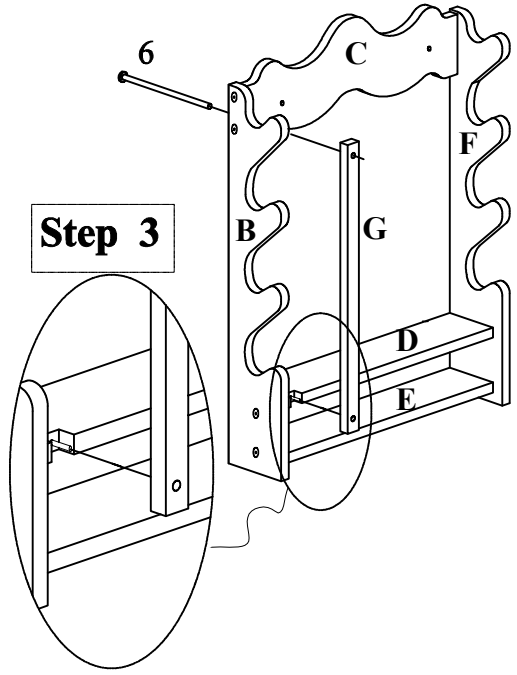


Step 2:
Attach Upper Back Rail (C), Drawer Top Panel (D) and Drawer Bottom Panel (E) by inserting Dowel (4) into the non-threaded holes. Insert the Metal Bullet (2) into the large holes in Upper Back Rail (C), Drawer Top Panel (D) and Drawer Bottom Panel (E). Insert Machine Screw (3) through Right Barrel Rest (F) and into Metal Bullet (2) inserted in parts C, D & E. Tighten the Machine Screw (3) using "L" Wrench (1).



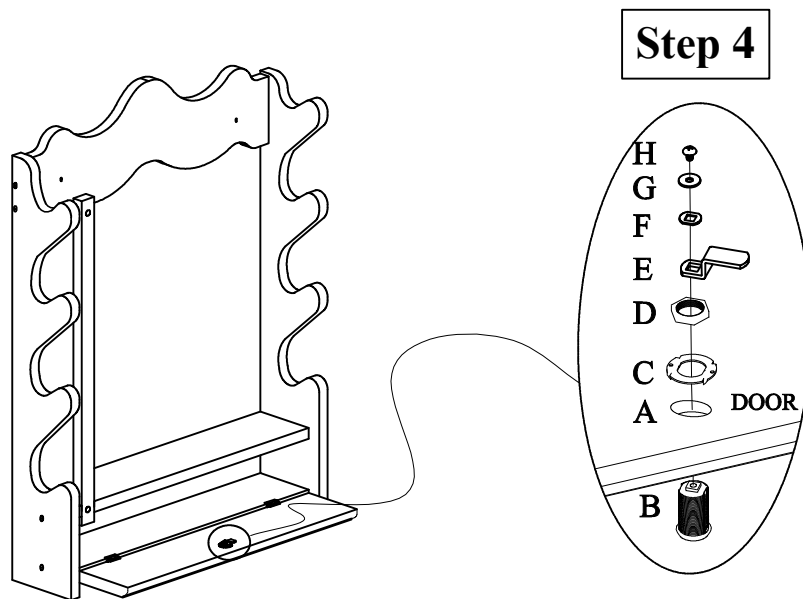
Step 3:
Insert the Support Pin (6) through the back of the Upper Back Rail (C) to the Lock Bar (G). Attach the bottom non-threaded hole on Lock Bar (G) to secure with Metal Pin on Drawer Top Panel (D).

Step 3



Assembly Instructions

Install the Lock of the Door



A. Lock hole
B. Lock
C. Gear Washer
D. Nut

E. Pin
F. Washer
G. Washer
H. Screw

Step 4

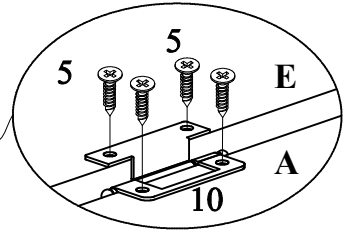
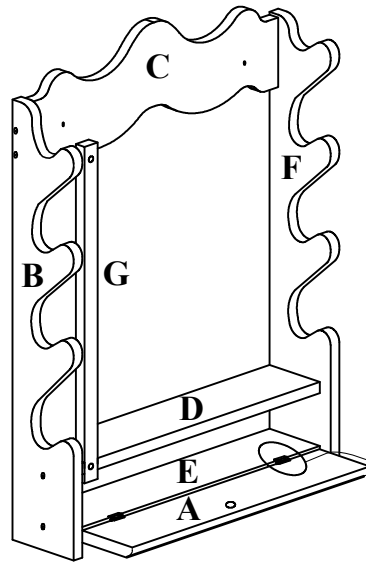
1. Insert Lock (B) into the Lock Hole (A).
2. Put Gear Washer (C) on the Lock (B).
3. Screw Nut (D) on Lock (B).
4. Place Pin (E) onto Lock Barrel (B). Make sure the rectangular hole on Pin (E) and on Lock Barrel (B) are aligned properly.
5. Place Washer (F) onto Lock Barrel (B) and insert Screw (G) into the end of Lock Barrel (B).
6. Tighten or loosen Screw (G) until Pin (E) fits tightly behind the back edge of the Door Frame when Door is fully closed and lock is in locked position.

Assembly Instructions: 840 Gun Rack

Step 5:

Place Drawer Front Panel (A) aligned with Drawer Bottom Panel (E). Attach the hinges (10) on Drawer Front Panel (A) and Drawer Bottom Panel (E) by using the Flat Head Wood Screw (5).

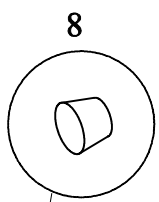
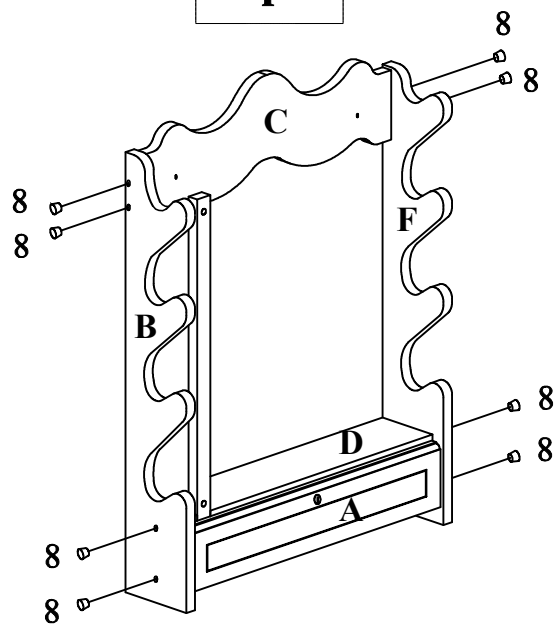
Step 5



Step 6:

Insert the Wood Plug (8) into the Left and Right Barrel Rest (B & F) holes.

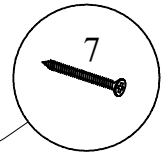
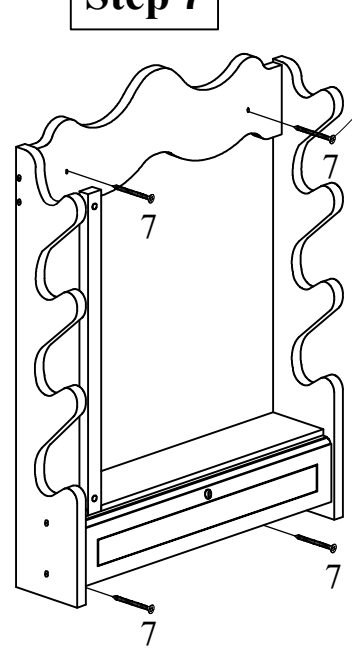
Step 6



Step 7

Step 7:

Fix the Gun rack by insert Screw (7) into the Upper back rail (C) and Drawer bottom panel (E).



Assembly is now complete.