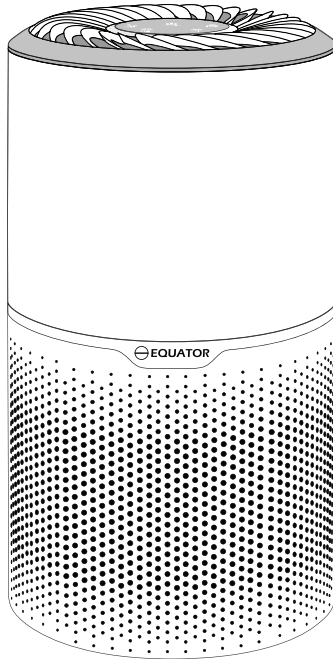




# Air Sterilizer

Model - APS 270 W



## OWNER'S MANUAL

---

Please read the instructions carefully and keep for future reference. Information may be updated from time to time so please refer to the manual online for the latest version of the manual.



## **Warranty**

---

Equator Appliances undertakes to the consumer-owner to repair or, at our option, to replace any part of this product which proves to be defective in workmanship or material under normal personal, family or household use, in USA and Canada, for a period of one year from the date of original purchase. For commercial use, the product is warranted for a period of 90 Days. During this period, we will provide all labor and parts necessary to correct such defect, free of charge, if the appliance has been Installed and operated in accordance with the written instructions with the appliance. Ready access to the appliance, for service, is the responsibility of the consumer-owner. Services would be provided from Monday to Friday between normal business hours.

## **Exclusions**

---

In no event shall Equator Appliances be liable for incidental or consequential damages or for damages resulting from external causes such as abuse, misuse, incorrect voltage or acts of God. This warranty does not cover service calls which do not involve defective workmanship or materials covered by this warranty. Accordingly, diagnosis and repair costs for a service call which does not involve defective workmanship or materials will be the responsibility of the consumer-owner.

**Specifically, the following work is not covered under warranty and does not constitute warranty work:**

**Installation - e.g. Insufficient spacing around appliance**  
**Maintenance - e.g. Cleaning the appliance using solvents**  
**Mishandling - e.g. Breakage of cover**

Most work is covered. The defining factor is, has the machine malfunctioned (Equator Appliances is responsible) or has the customer omitted or done something to cause the machine to malfunction (customer is responsible). Some states do not allow the exclusion or limitation of incidental or consequential damages, so the above limitation of exclusion may not apply to you.

## WARRANTY SERVICE

---

This warranty is given by:

### **Equator Appliances**

10222 Georgibelle Drive, Suite 200  
Houston, Texas 77043-5249

### **For Service:**

Call: 1-800-776-3538

Email: [service@ApplianceDesk.com](mailto:service@ApplianceDesk.com)

Web: [www.ApplianceDesk.com](http://www.ApplianceDesk.com)

Business hours: 9:00 am to 5:00 pm weekdays

You can register your Warranty by either of the following methods:

1. Scan QR Code

#### **QR Code**



1. Open Smart Phone
2. Open Camera
3. Scan QR Code
4. Click the Link

2. Register online at [ApplianceDesk.com/Warranty](http://ApplianceDesk.com/Warranty)

## GENERAL

---

Since it is a responsibility of the consumer-owner to establish the warranty period by verifying the original purchase date, Equator Appliances recommends that a receipt, delivery slip or some other appropriate payment record be kept for that purpose.

This warranty gives you specific legal rights, and you may also have other rights which vary from State to State.

*All rights reserved. Manual subject to change without notice.*

The Air Sterilizer use UV-C sterilizes the air by killing germs, bacteria, microbes and fungi.

The Ionizer removes dust and smoke, using negative ion technology to purify the air. The active carbon deodorizing fiber filter can fully filter out PM2.5 (particulate matter) and formaldehyde.

The Purifier uses a pre-filter, true HEPA filter and carbon-activated filter, which removes fur, dust, particles and odors. If you have pets, the 3-part filtration system is ideal for keeping the indoor air fresh and clean.

This appliance is intended for indoor household use only.

**Safety** 

Ensure NOT to do the following:

- Use near volatile or flammable items.
- Immerse or wash with water.
- Obstruct the air outlet area.
- Use if power cord or plug are damaged.
- Insert or remove the power plug with wet hands.
- Unplug by pulling on the power cord.
- Place objects on top of the appliance.
- Use strong chemicals or abrasive materials to clean the appliance.

Ensure the appliance is unplugged before moving it or doing any maintenance on it.

Children should be supervised to ensure that they do play with the appliance.

This appliance is not intended for use by persons (including children) with reduced physical, sensory or mental capabilities, or lack of experience and knowledge, unless they have been given supervision or instruction.

Please dispose of this appliance in accordance with local regulations.

## Placement

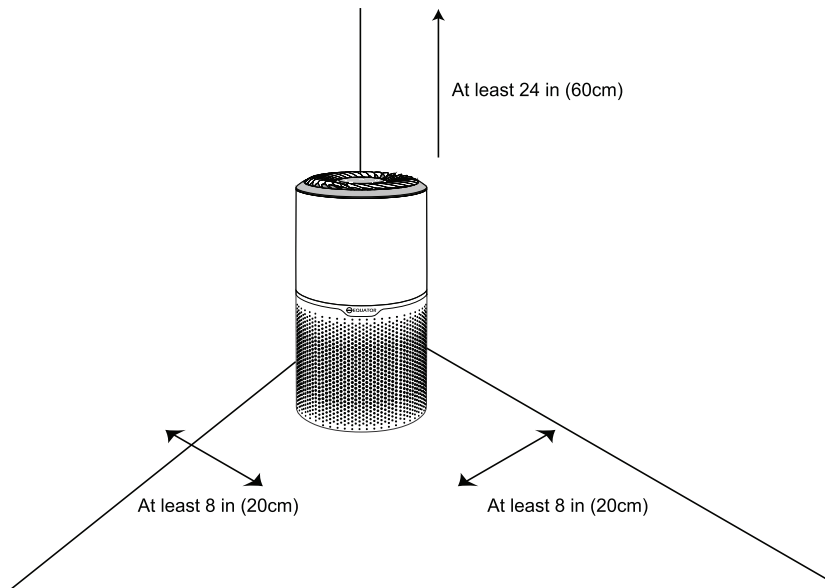
Place the appliance on a flat stable surface, away from any obstructions. Do not place it near an edge, where it could fall over.

Place away from heat sources, such as stoves, heaters, etc.

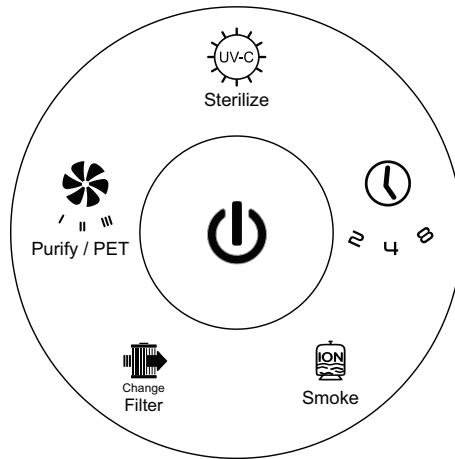
Ensure the power cord is away from traffic areas to prevent a tripping hazard.

Connect the Power Adaptor plug into a dedicated 110V/60Hz electrical socket.

Ensure there is adequate space around the appliance. It should be at least 8 inches (20 cm) away from walls or furniture and there should be at least 24 inches (60 cm) of clearance above it.



## Operation



The Control Panel is located on top of the appliance. The appliance can be operated by either pressing the buttons on the Control Panel or on the Remote Control. The Power button is in the center, with the following buttons located around it: UV-C, Timer, Ionizer, Filter Alarm and Fan Speed.

Press the Power button to start or stop operating the appliance. When turned on, the Power button illuminates, and air purification begins. Air intake is from 360 degrees in all directions. The clean air will come out from the top.

Press the UV-C button to select the Sterilization mode. The UV-C function sterilizes the air by killing germs, bacteria, microbes and fungi.

Press the Timer button to select 2, 4 or 8 hours as the duration of time desired for the appliance to operate.

Press the Smoke (Ionizer) button to select removal of dust and smoke.

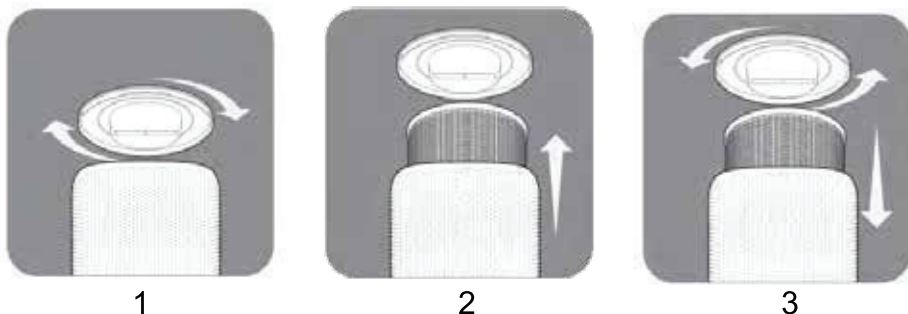
The filter can be used for approximately 2200 hours. When it is time to change the filter, the Change Filter icon flashes and beeps. Press this button and the beep stops but the icon will continue to flash until the filter is changed.

Press the Fan Speed button to select low, medium or high air flow speed. The selected speed: I, II or III will illuminate.

## Changing the Filter

(Combined pre-filter, true HEPA filter and carbon-activated filter)

Ensure the appliance is turned off and unplugged before changing the filter.



- Carefully turn the appliance upside down and rest it on a stable surface.
- Turn the base cover counterclockwise and remove it.
- Remove the old filter and replace with the new one.
- Turn the base cover clockwise to lock the filter in place, and then return the appliance to the upright position.
- Press and hold the Filter button for **3** seconds. The Filter icon will stop flashing and the appliance will recalculate the filter replacement time.

## Maintenance

Use a dry cloth to clean the appliance. Do not use chemicals and cleaning solutions to clean.

## Specification Table

Model	APS 270 W
CADR (Clean Air Delivery Rate)	150 m <sup>3</sup> /h
Application Area	269 sq ft
Adapter Input / Output	100-240V / 12V / 2A
Noise Level	40dB
Net Weight	4.6 lbs
Product Dimensions (HxD)	8.7" x 15"

## Troubleshooting

Problem	Possible Reason	Solution
Appliance is not working	Not connected to power	Connect to power supply
	Power is not switched on	Press the Power button
	Power adaptor is loose	Connect the adaptor firmly
Odor emitted from outlet	The filter is full of dust and odors	Replace the filter
	Filter has been used for many hours and needs to be replaced	Replace the filter
Poor purifying efficiency	The appliance is placed where there is not adequate ventilation and air is blocked	Change location and remove barriers
Noise	Air outlet fan is obstructed	Clear obstructions

### California Proposition 65

**WARNING:** This product contains chemical known to the State of California to cause cancer and birth defects or other reproductive harm.



**Equator Advanced Appliances USA** was established in 1991 for providing the most Efficient, Highest Quality and Innovative household appliances.

**Equator's mission** is to provide Innovative, Practical, Top-Quality appliances that Save Time, Space and Energy and Simplify domestic chores.

**Equator's vision** is to Improve the Quality of Life for our Customers!

**Equator Appliances USA**

[www.EquatorAppliances.com](http://www.EquatorAppliances.com)