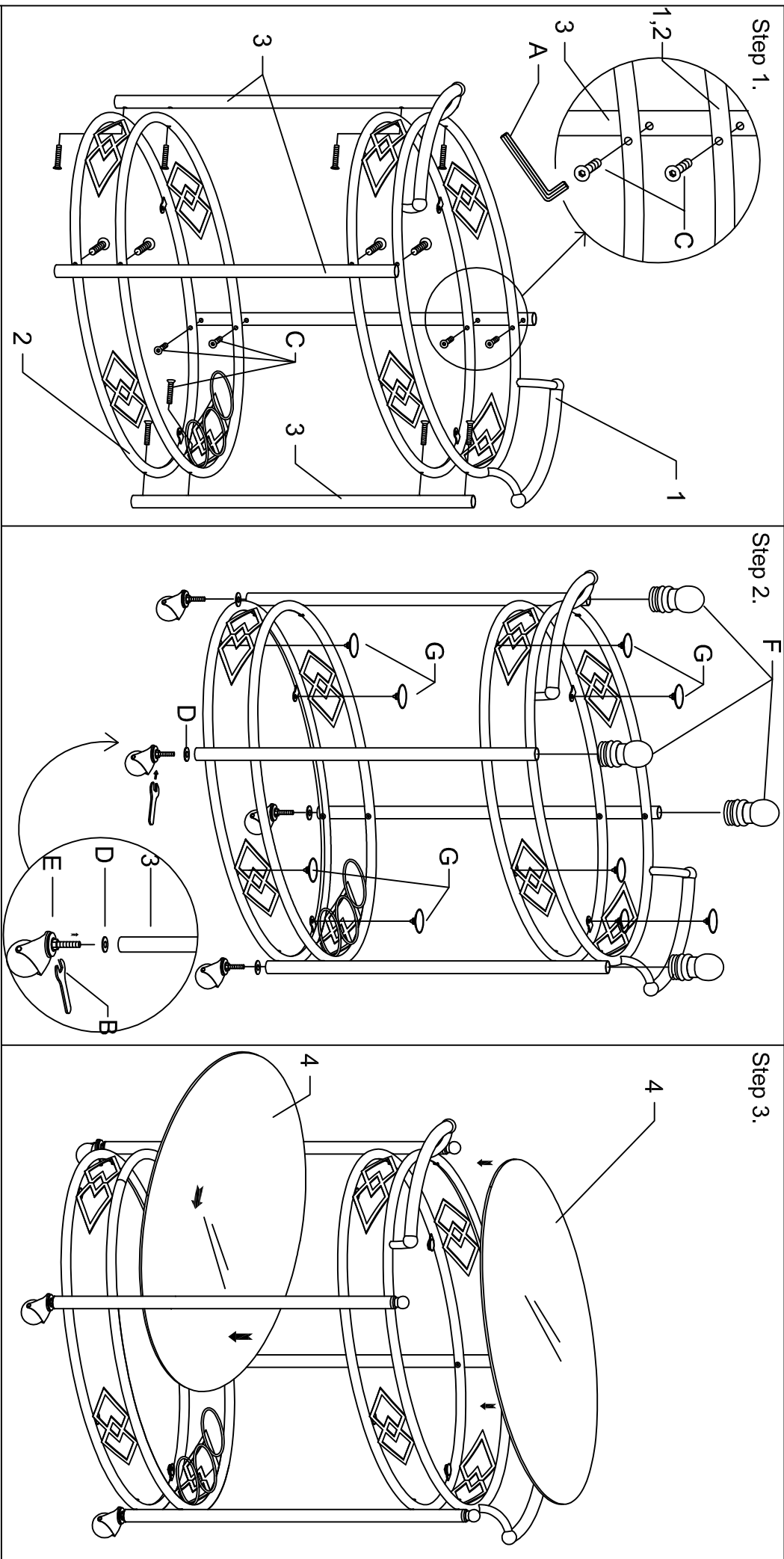


**** Do not tighten any bolts until all of them have been started!**



ACCESSORY PACK			
A	B	C	D
1/4"	1PC	1/4" x 25 mm, 16PCS	4PCS
E	F	G	
4PCS	4PCS	4PCS	8PCS
COMPLETE HARDWARE			

1	2	3	4
1PC	1PC	1PC	4PCS
1PC	1PC	1PC	2PCS