

YOSEMITE HOME DECOR



YFUR-SBA5162

STORAGE CONSOLE WITH WHEELS

IMPORTANT SAFETY INSTRUCTIONS

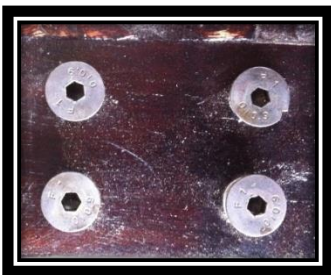
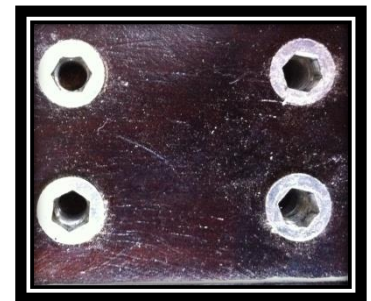
- *Please read all instructions carefully before assembling*
- *For your safety, assembly by two or more adults is strongly recommended*
- *Keep instructions for future use*
- *Use only vendor supplied hardware to assemble. using unauthorized hardware could jeopardize the structural integrity for the item:-*

PRE-ASSEMBLY:-

- *Remove all parts and hardware from the box and lay out on a clear carpeted or scratch-free work surface as this will avoid damaging parts during assembly. The shipping box provides an ideal work surface.*
- *Do not dispose of any packaging or contents of the shipping carton until assembly is completed to avoid accidentally discarding small parts or hardware*
- *Use the parts and hardware lists below to identify and separate each of the pieces included.*
- *The illustrations provided allow for easier assembly when used in conjunction with the assembly instructions.*
- *The use of power tools to aid in assembly is not recommended. Power tools can damage hardware and split wood.*

PARTS INCLUDED:-

| | |
|---------------------|------|
| A. WHEELS | 4 PC |
| B. IRON BOLT | 4 PC |
| C. IRON NUT | 8 PC |
| D. ALAN KEY | 1 PC |
| E. WRENCH | 1 PC |
| F. IRON WASHER | 4 PC |
| G. IRON WHEEL STAND | 4 PC |

**(HARDWARE)****Assembly instruction steps:-****(A)****(B)****(C)****STEP 1-**

Remove ALL THE FOUR SCREWS FROM THE ALAN KEY.

(PICTURE AFTER SCREWS)

TOOL REQUIRED (INCLUDED):-



STEP 2.

PUT THE IRON STAND ON TO FOUR SIDED HOLES.



STEP 3.

FIX THE ALL 4 SCREW INTO HOLES WITH HELP OF ALAN KEY AND TIGHT IT.



(AFTER ASSEMBLED)



STEP 4.

PUT THE IRON WHEEL ON STRAIGHT WAY TO HOLES



STEP 5.

PUT THE RING WASHER ON THE HOLE SIDE OF THE WHEEL AND THEN TIGHT THE SCREW WITH IRON BOLT WITH HELP OF WRENCH



COMPLETE ASSEMBLED