



Liberty Furniture

INDUSTRIES, INC

ASSEMBLY INSTRUCTION

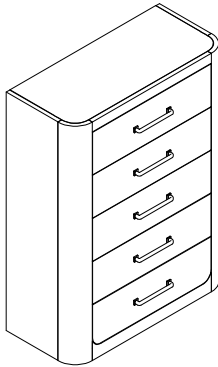
ITEM#: 306-BR41



DESCRIPTION: 5 DRAWER CHEST

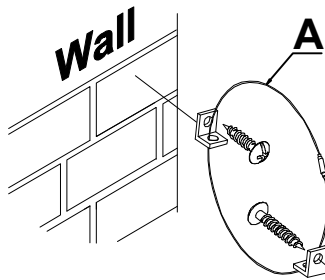
Thank you for purchasing this quality product. Be sure to check all packing material carefully for small parts which may have come loose inside the carton during shipment. Identify and count all parts and compare with the parts List Below:

PART LIST:

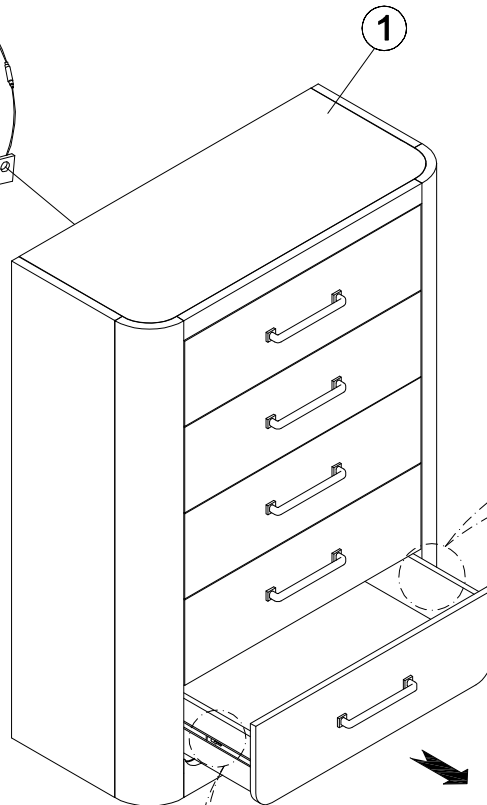
FINISHED ASSEMBLY



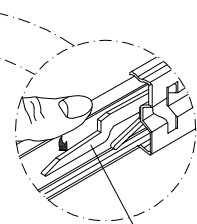
① 	② HARDWARE LIST			
	NO.	Drawing	Description	Q'ty
	5 DRAWER CHEST: 1PC	A	 Tipping Restraint	1 set



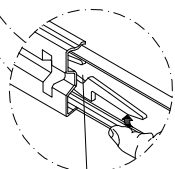
Tipping Restraint must always be used to prevent the furniture from tipping.



LEVELER



Push tab down



Push tab up

To remove drawer, simultaneously pull tab up on one side and push down on the other and remove drawer.

Made in VietNam